

The logo for Microtik is centered on the page. It features the word "Microtik" in a white, italicized, sans-serif font. The letter "i" in "Micro" has a distinctive white arc above it. The "T" in "tik" is bold and has a horizontal bar that is slightly wider than the stem. The background is a blurred office scene with desks, chairs, and windows, overlaid with a red-to-purple gradient.

*Microtik*





WHAT DO WE DO?





WE CREATE NETWORKS



# Mikrotik

- Made in 1996, building networks ever since
- Latvian company
- Mikrotīkls means “Small network” in Latvian language





LATVIA





Continuing the tradition of 120 years of history  
where the Latvian industrial revolution began.





РАДНОЕ  
УЧЕБНОЕ ЗАВЕДЕНИЕ  
ИЗДАНО В 1882  
УНИОНЪ







The background features a blurred image of various network hardware components, including a black HAPS device with a port panel, a white vertical rack-mountable device, a white horizontal device with a port panel, and a white patch panel. The image is overlaid with a red-to-purple gradient.

WE MAKE SOFTWARE AND HARDWARE



# MORE THAN 200 PRODUCTS



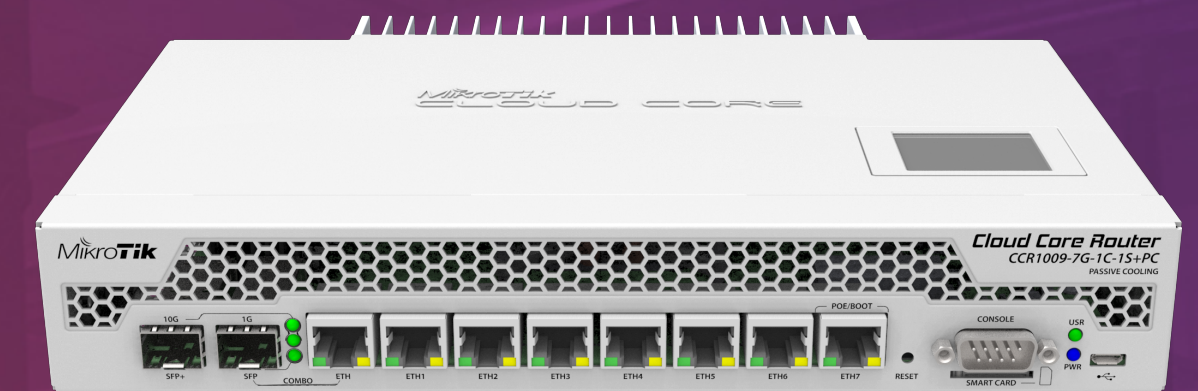
HOME



OUTDOOR



SOHO



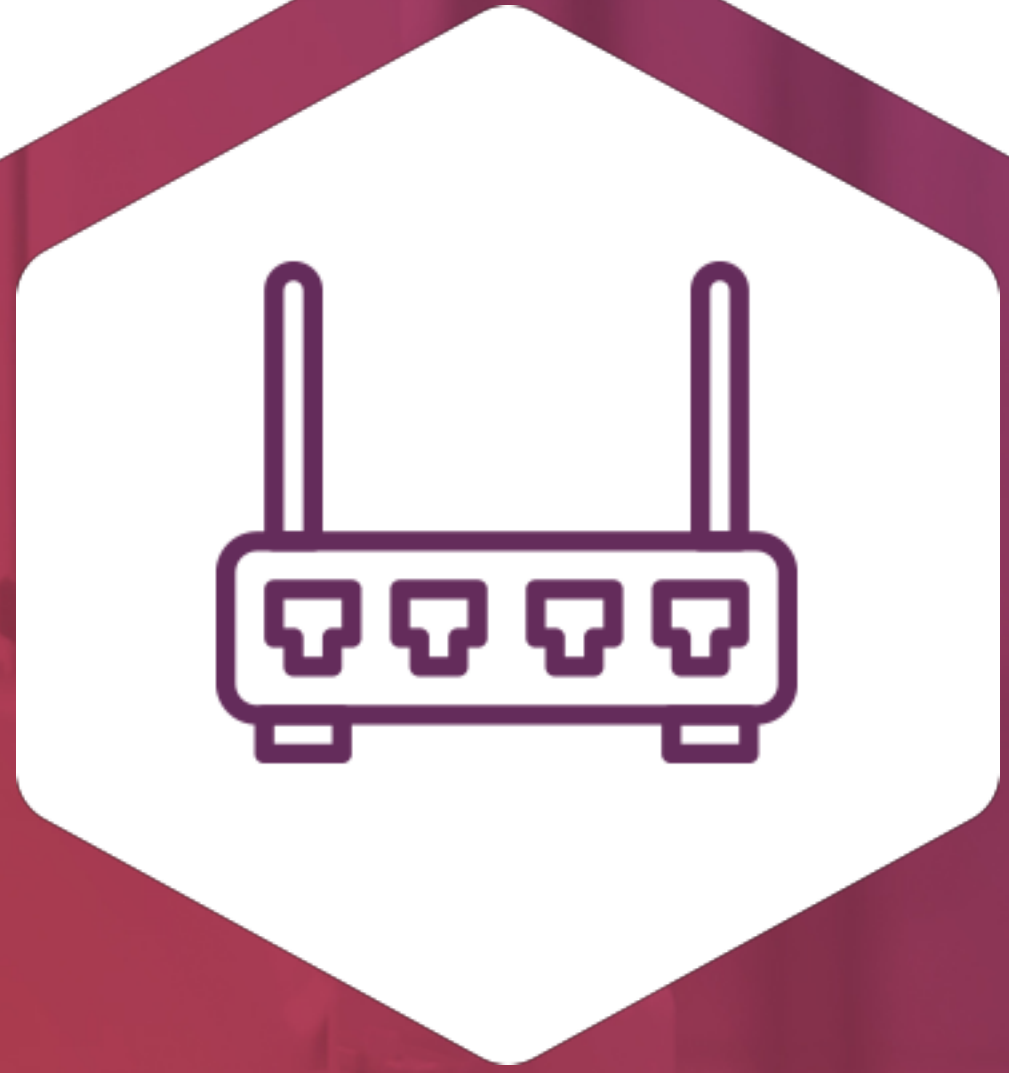
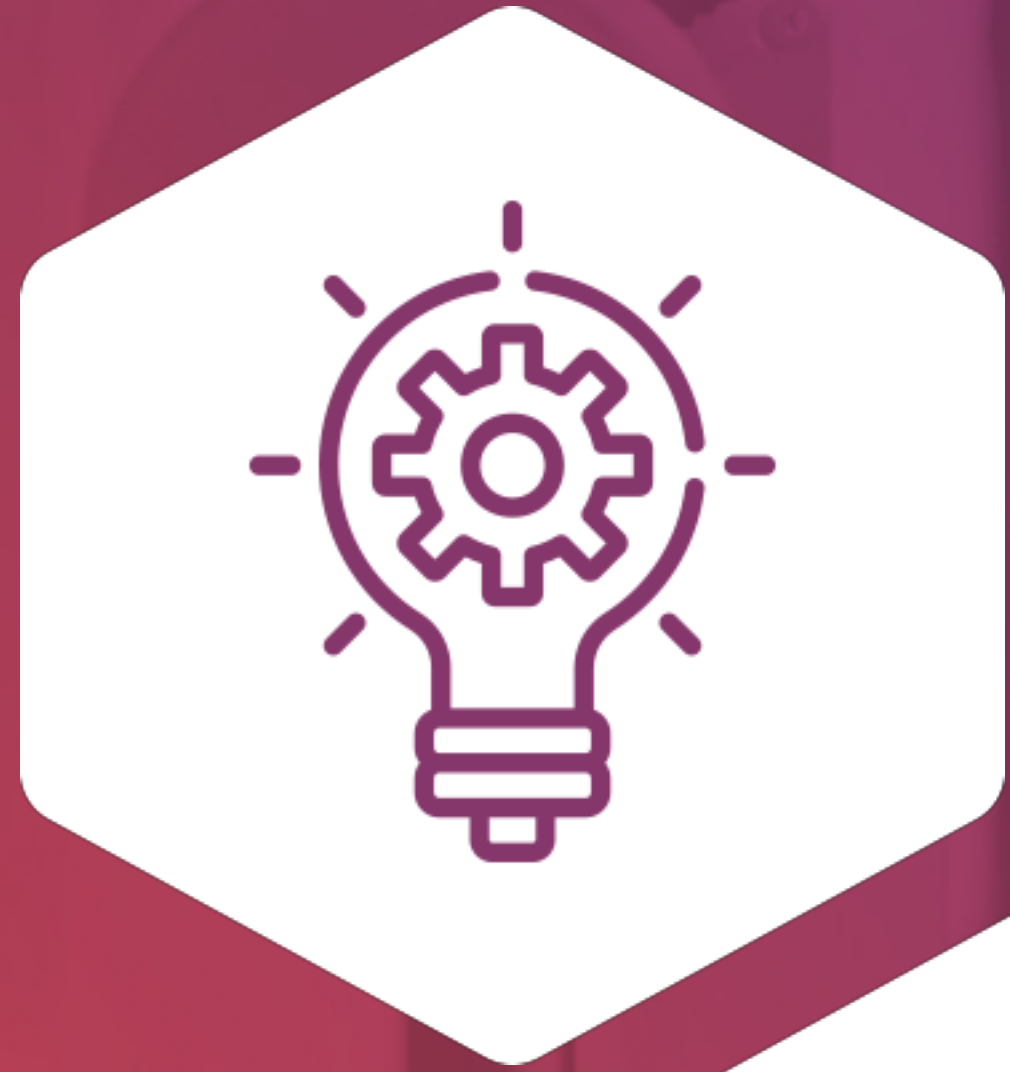
CARRIER





# THE PROCESS

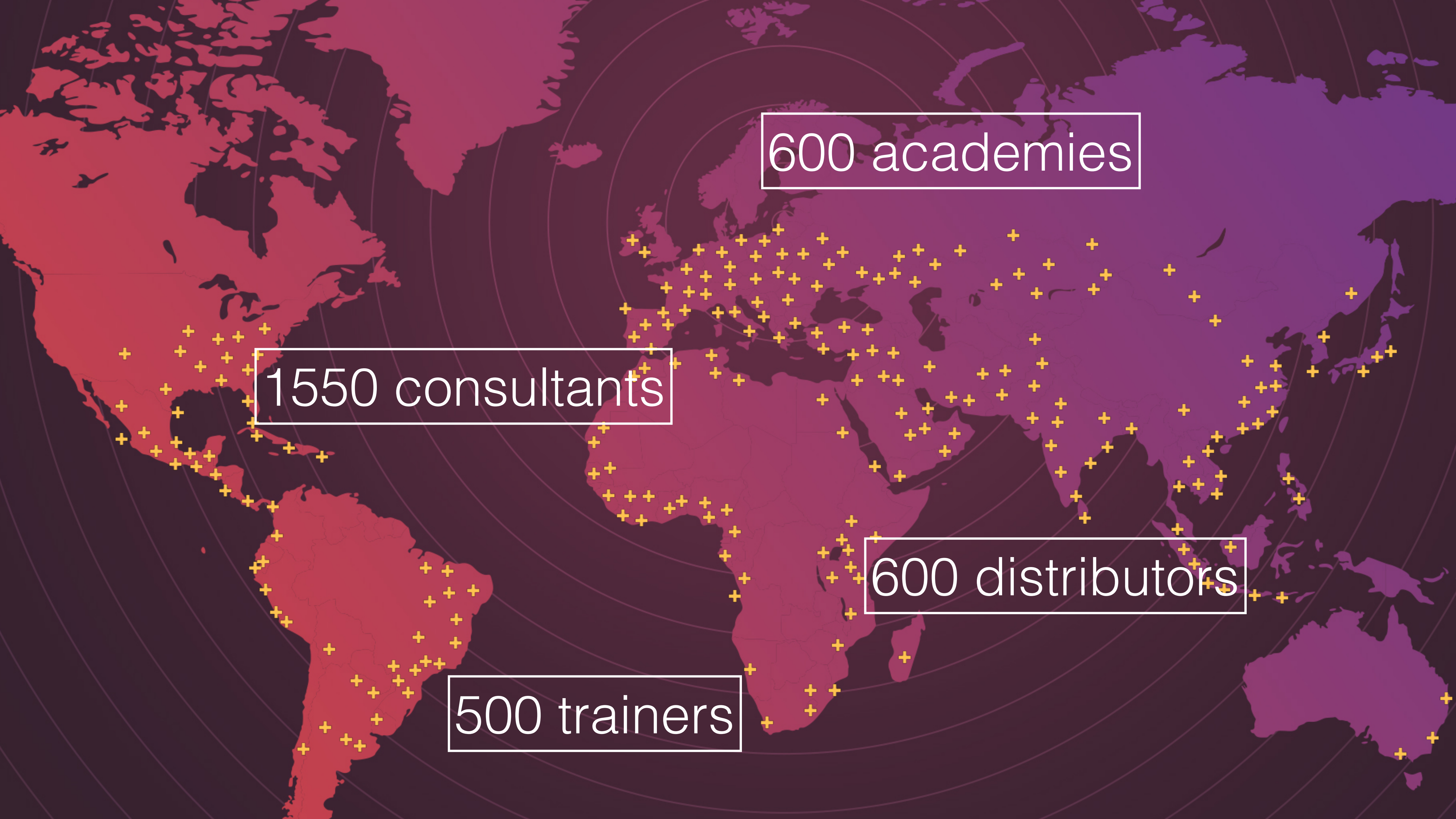






AVAILABLE AROUND THE WORLD





600 academies

1550 consultants

600 distributors

500 trainers



The background of the slide is a photograph of a server room. On the left, there are several server racks with various components and cables. On the right, a person is visible, leaning over a desk or workstation, possibly working on a computer or server. The image is overlaid with a semi-transparent purple and red gradient. A white rectangular box is centered horizontally across the middle of the image, containing the text 'MIKROTIK USER MEETING' in white, uppercase, sans-serif font.

# MIKROTIK USER MEETING





80+ countries

200 events

3500+  
participants



# MUM EUROPE 2019

- 14 staff members from MikroTik
- Arrange a business meeting at the registration desk
- 2 full days of presentations, see <http://mt.lv/agenda>
- Lunch with voucher
- 48 exhibitors
- MUM-Vienna-Fast with password “mikrotik”

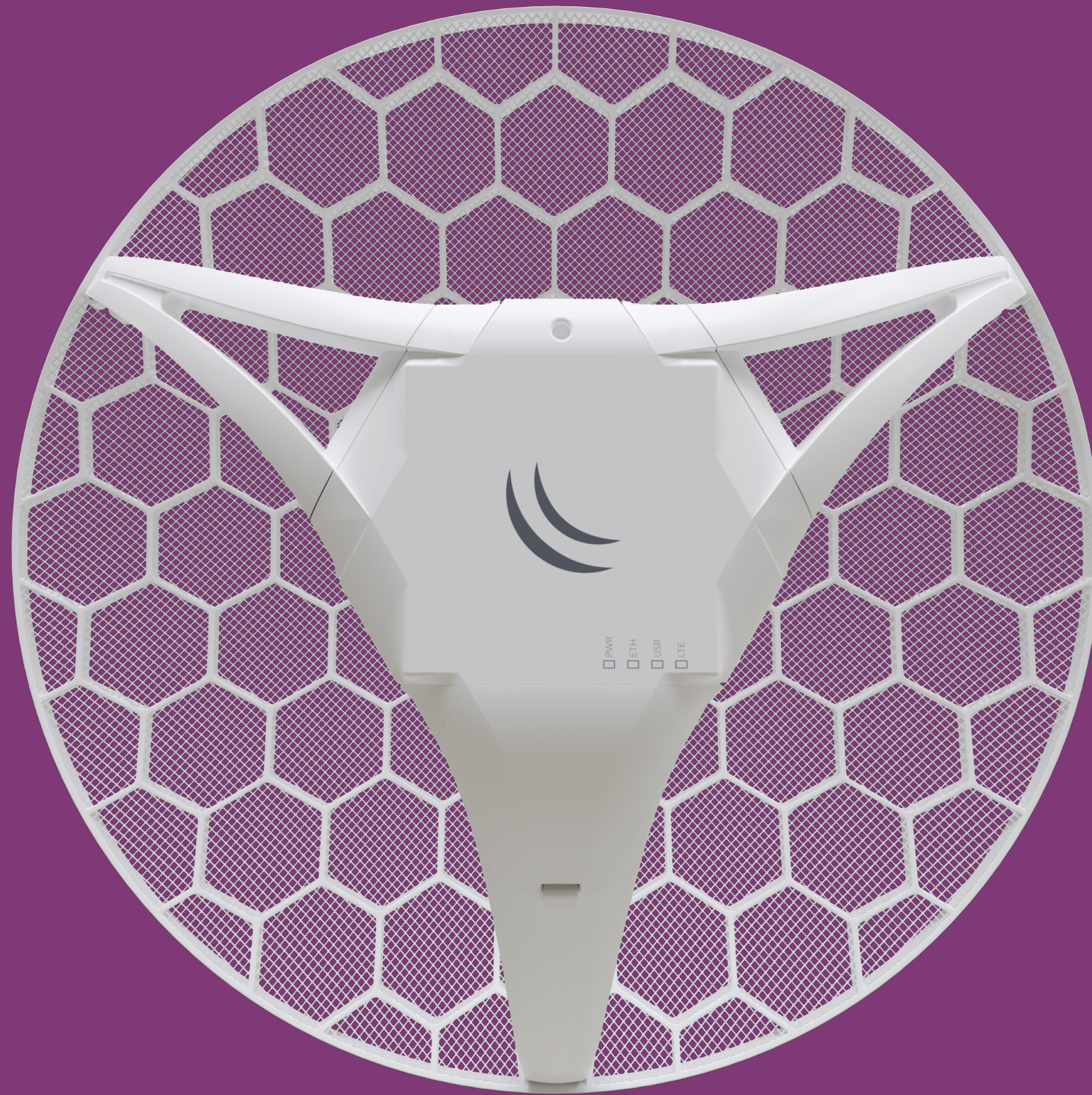




# PRODUCT UPDATES



# LHG LTE



- High gain dish for remote locations
- miniPCIe card can be upgraded



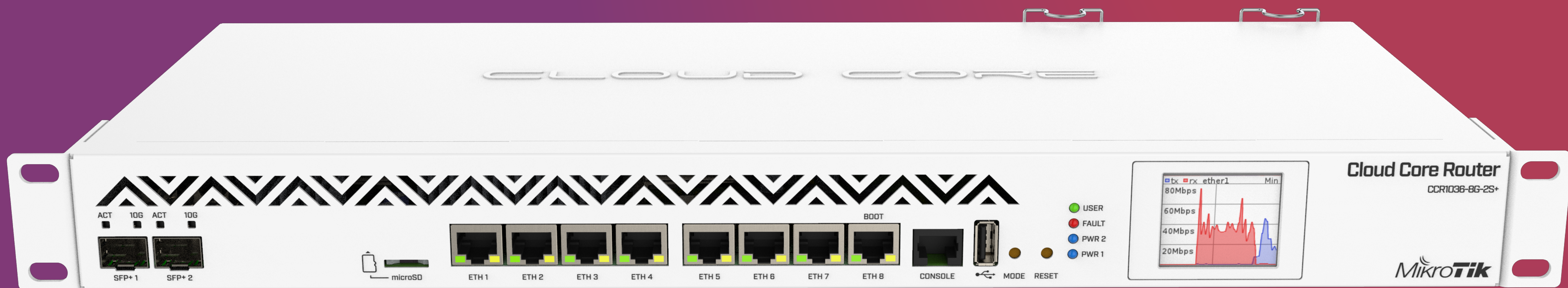
# LtAP



- Still coming, soon, promise!
- Three SIM slots, two miniPCIe
- GPS (GNSS), built-in WiFi, multiple power sources, USB, console, SMA connectors

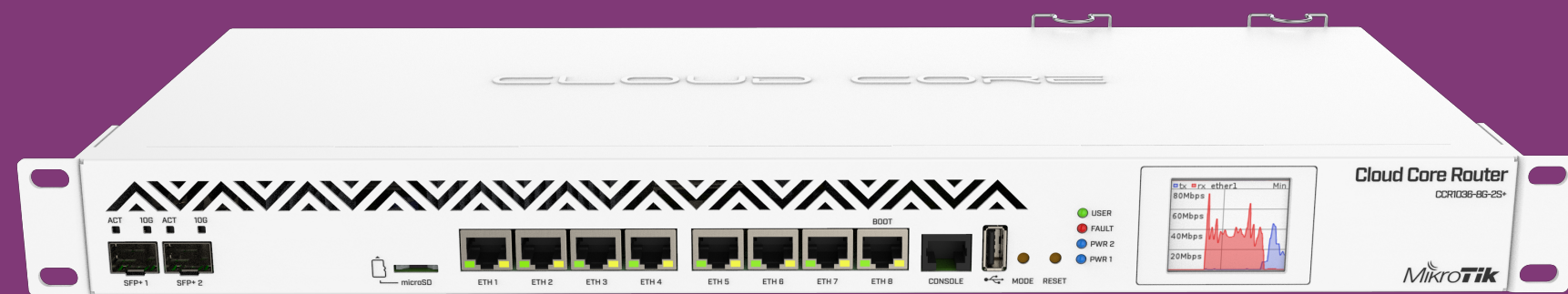


# CCR1036 and CCR1016





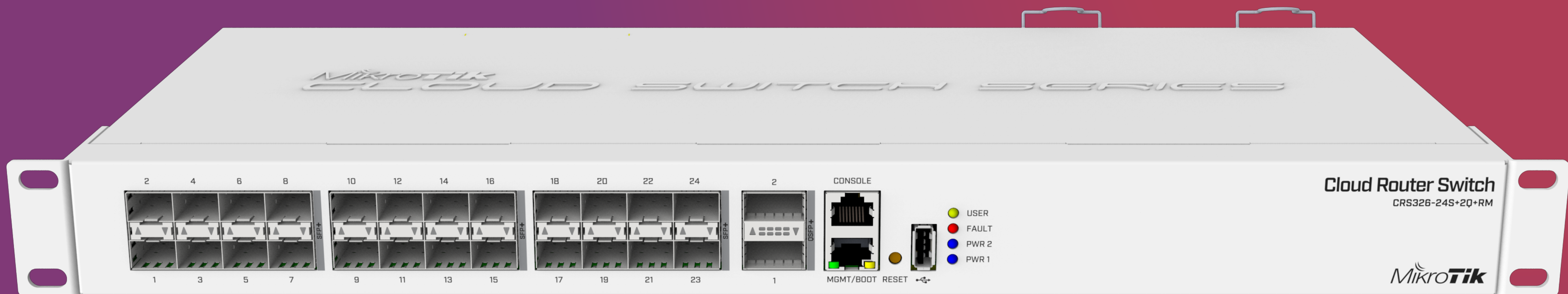
# CCR1036 and CCR1016



- All CCR in these series now will have dual PSU for redundancy
- Full size USB port
- Improved PSU design. Optional 48 V PSU available separately
- CCR1036-8G-2S+; CCR1036-12G-4S;  
CCR1016-12G; CCR1016-12S-1S+



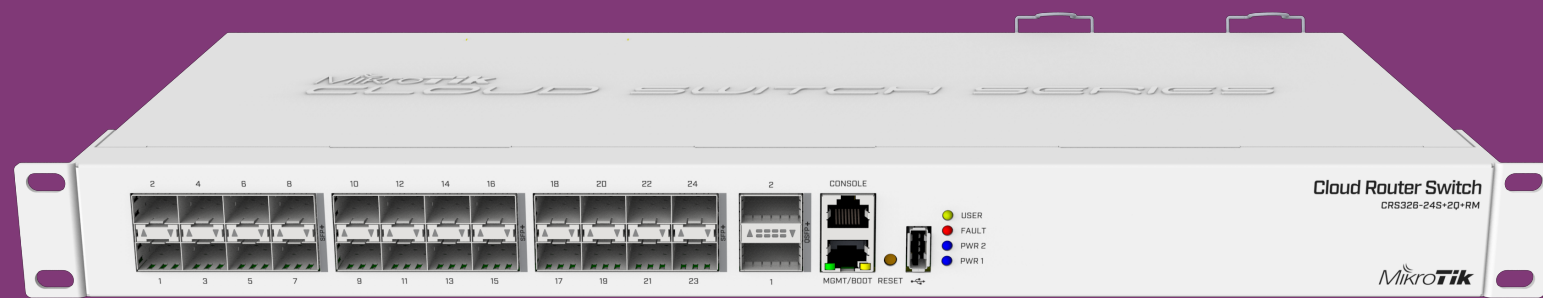
# CRS326-24S+2Q+





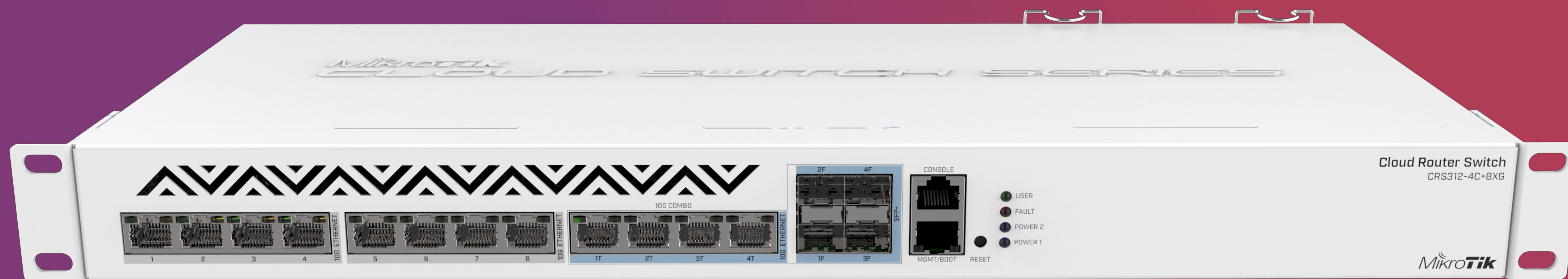
# CRS326-24S+2Q+

- 24x SFP+ (10G ports)
- 2x QSFP+ (40G ports)
- Previously announced as CRS332-32S+
- Will be available in Q3 2019



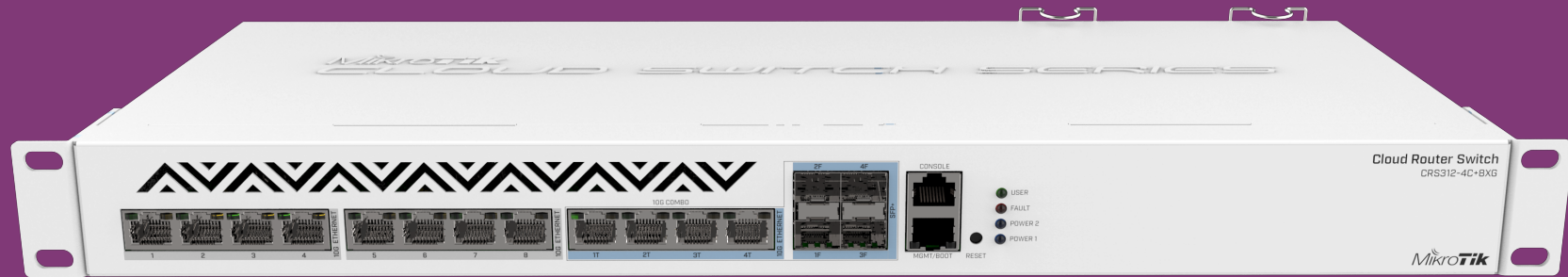


# CRS312-4C+8XG





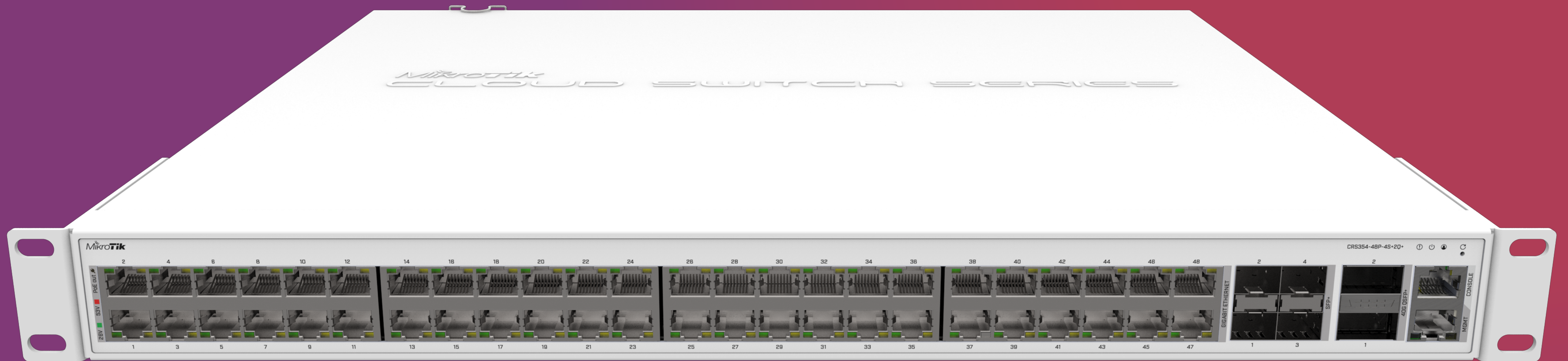
# CRS312-4C+8XG



- 8x 10G Ethernet ports
- 4x 10G Ethernet / 10G SFP+ combo ports
- Console and management ports
- Dual PSU
- Will be available in Q2 2019

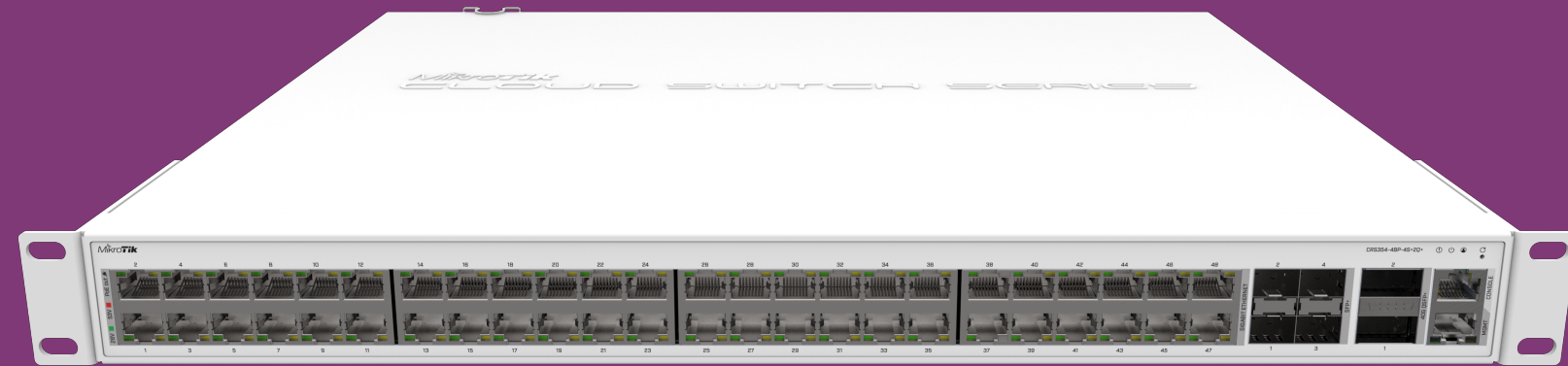


# CRS354-48G-4S+2Q+





# CRS354-48G-4S+2Q+



- 48x Gigabit ports
- 4x SFP+ ports
- 2x QSFP+ ports
- 48x PoE out port version
- Expected Q4 2019





PRODUCT PLAN 2019

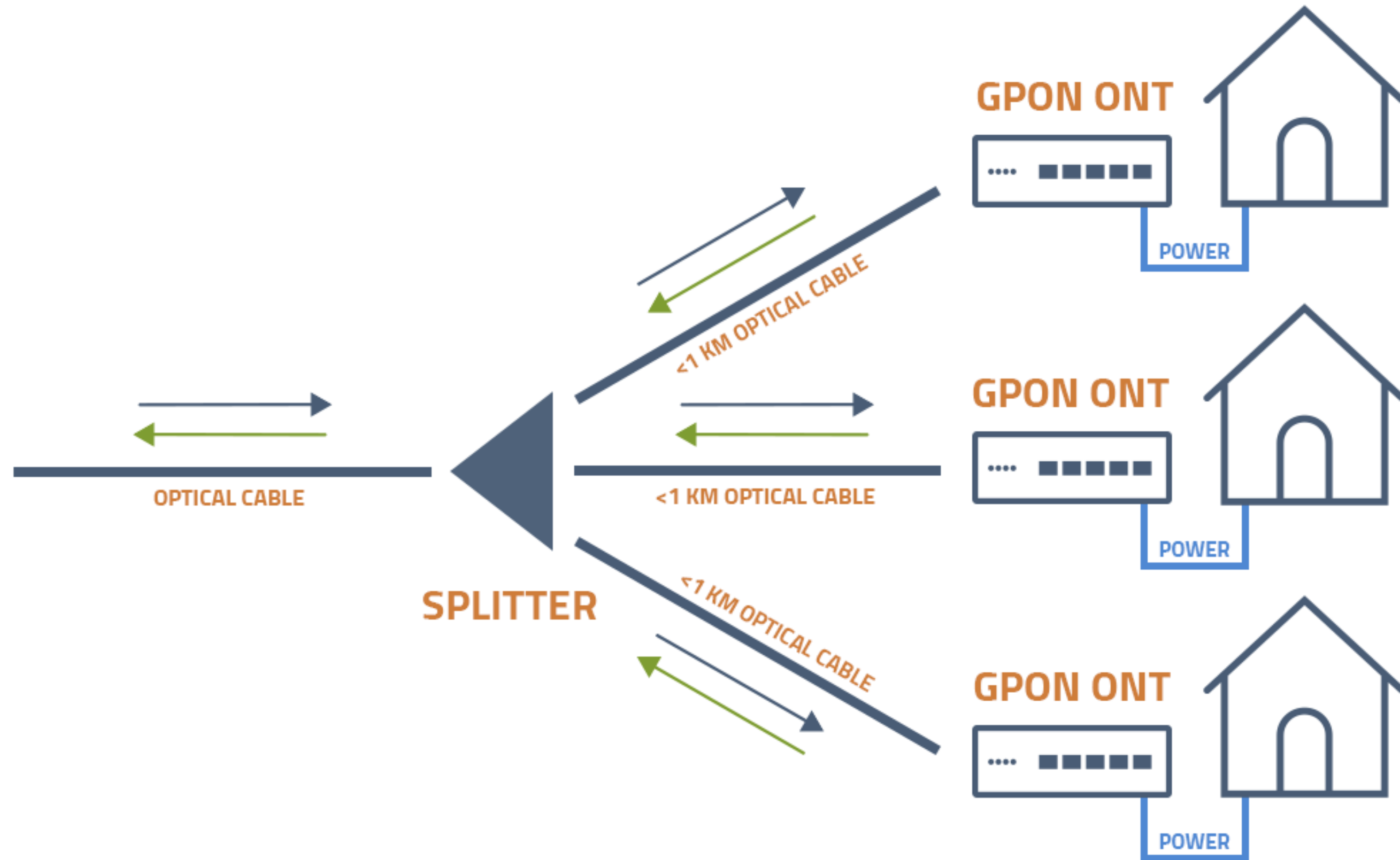
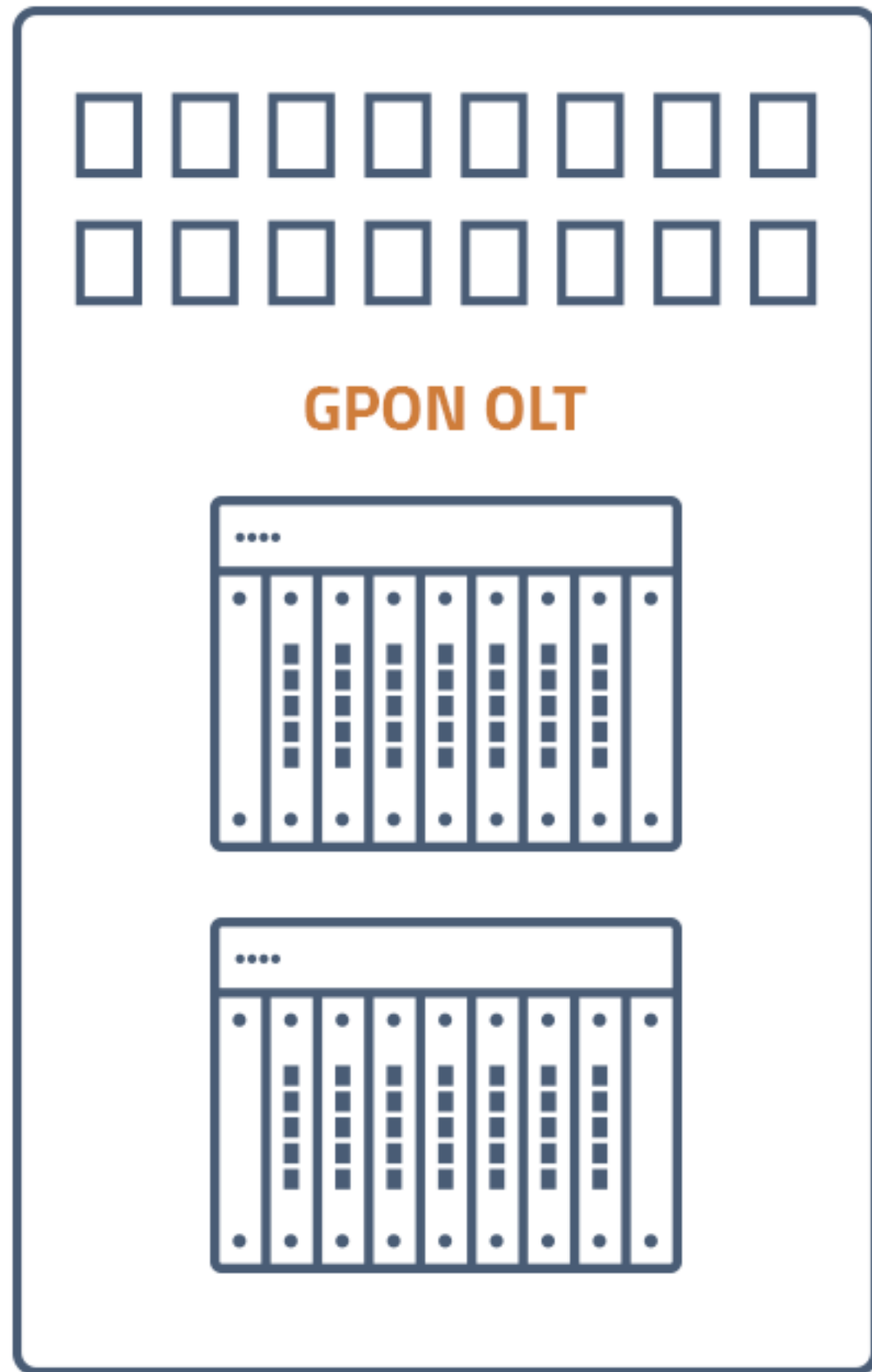




GPEN



## CENTRAL OFFICE





The background of the image shows a blurred network equipment rack. On the left, a black HAPS (Home Access Point System) device is visible with its ports labeled 'LAN' and 'Public Port'. In the center, a white network switch or router is partially visible. On the right, another white network device is seen. The entire scene is overlaid with a semi-transparent purple-to-pink gradient.

# GIGABIT PASSIVE ETHERNET NETWORK

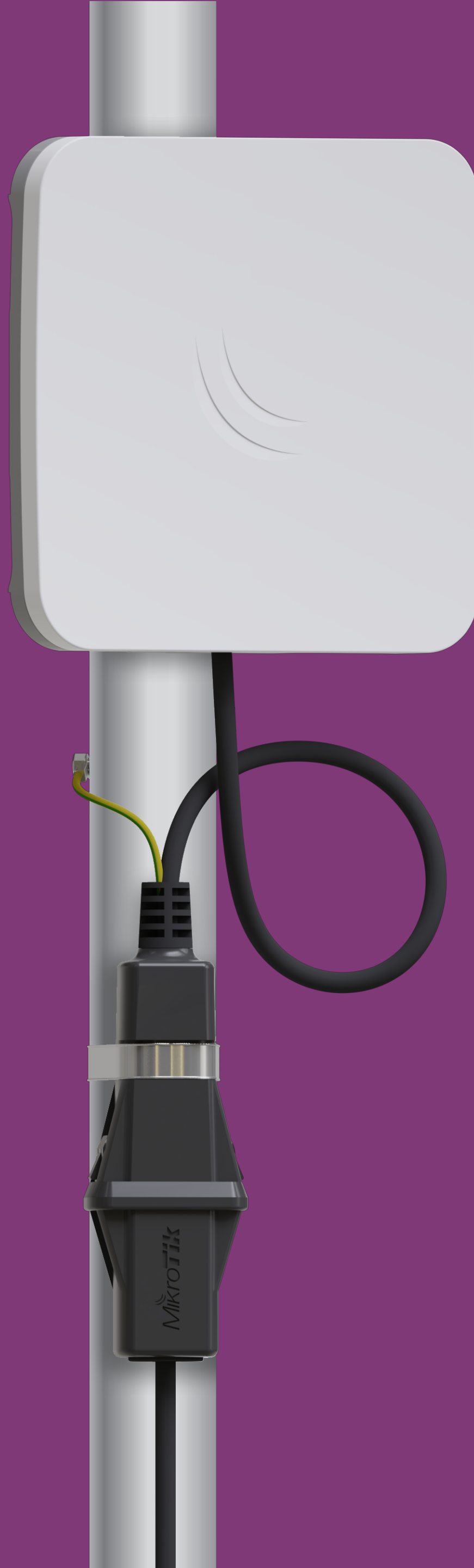


# GPER



- Gigabit passive Ethernet repeater
- Ethernet extender with PoE passthrough
- 24-57 V supported
- ~2.5 V loss per 100 meters, allows up to 1.5 km long cable with PoE





# GESP

- Gigabit Ethernet surge protector
- Up to 30 kV
- Tower, server room or both



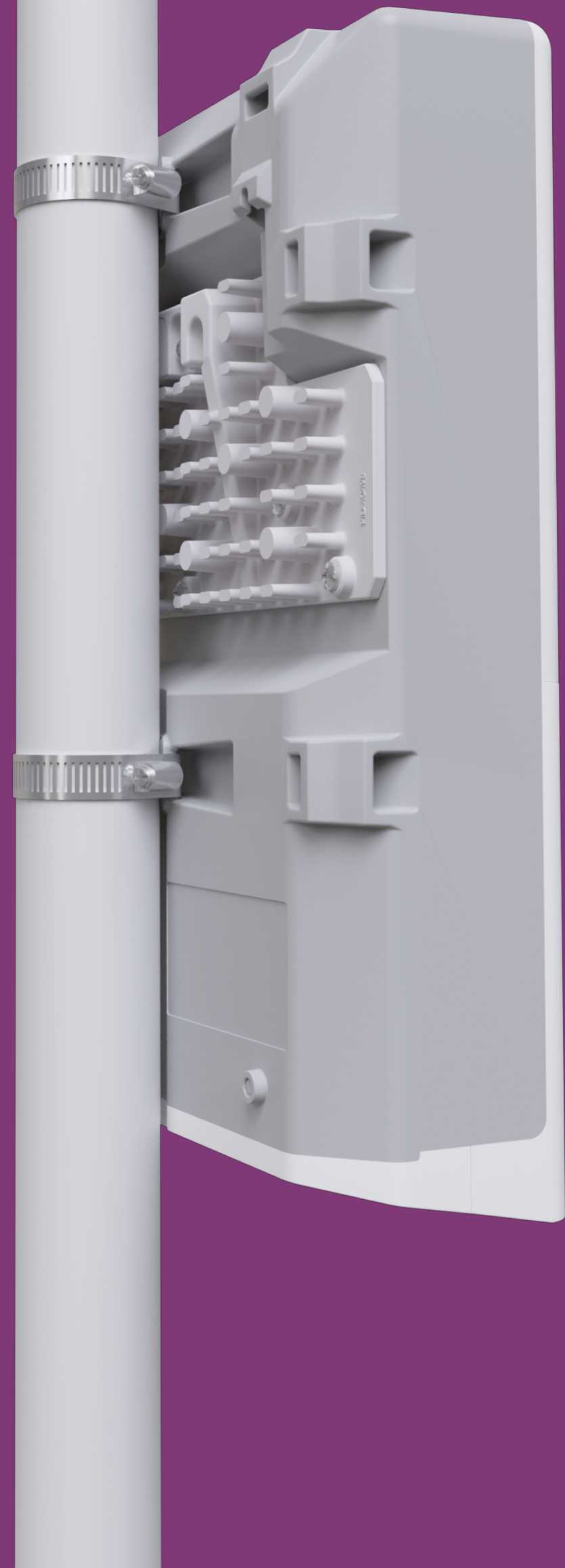


# GPEN

- Gigabit passive Ethernet network
- GPEN11 - PoE injector, can be mounted securely
- GPEN21 - smart injector, also adds SFP for fiber to copper functionality



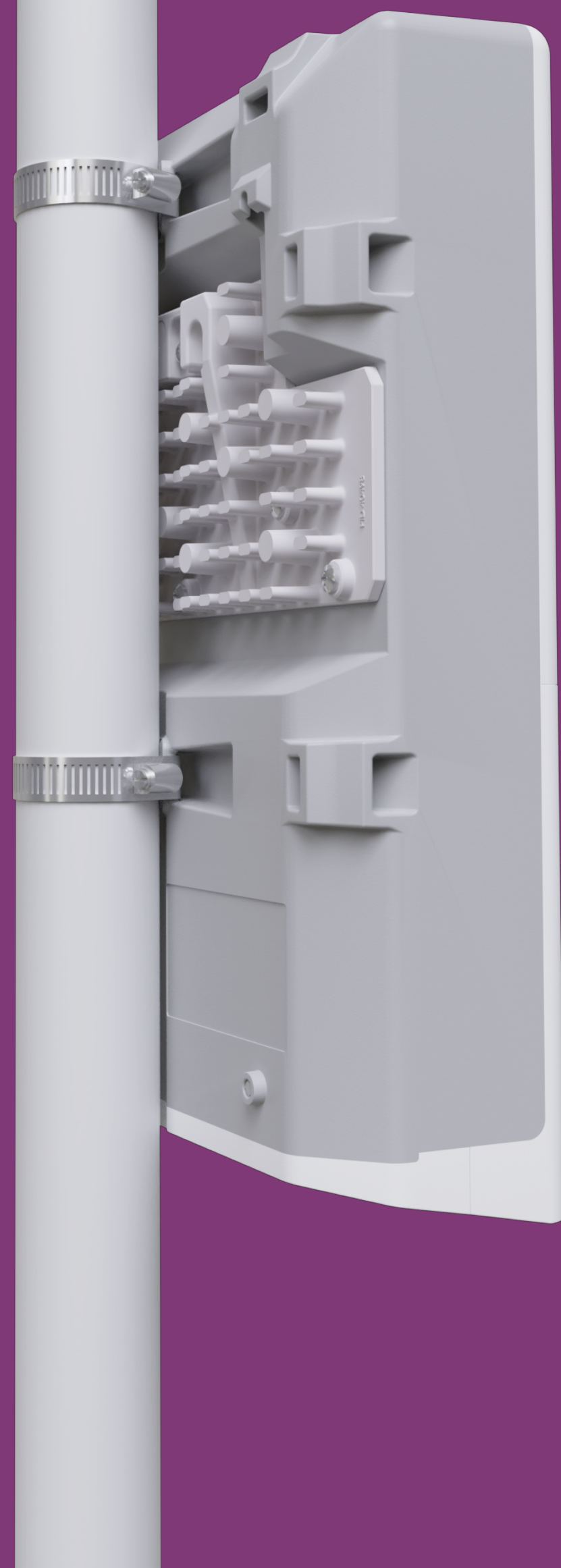
# CRS318-16Fi-2S



- 16 Ethernet ports and 2xSFP uplinks
- Reverse PoE (PoE in) on 15x ports
- Very affordable pricing
- PoE out on single port



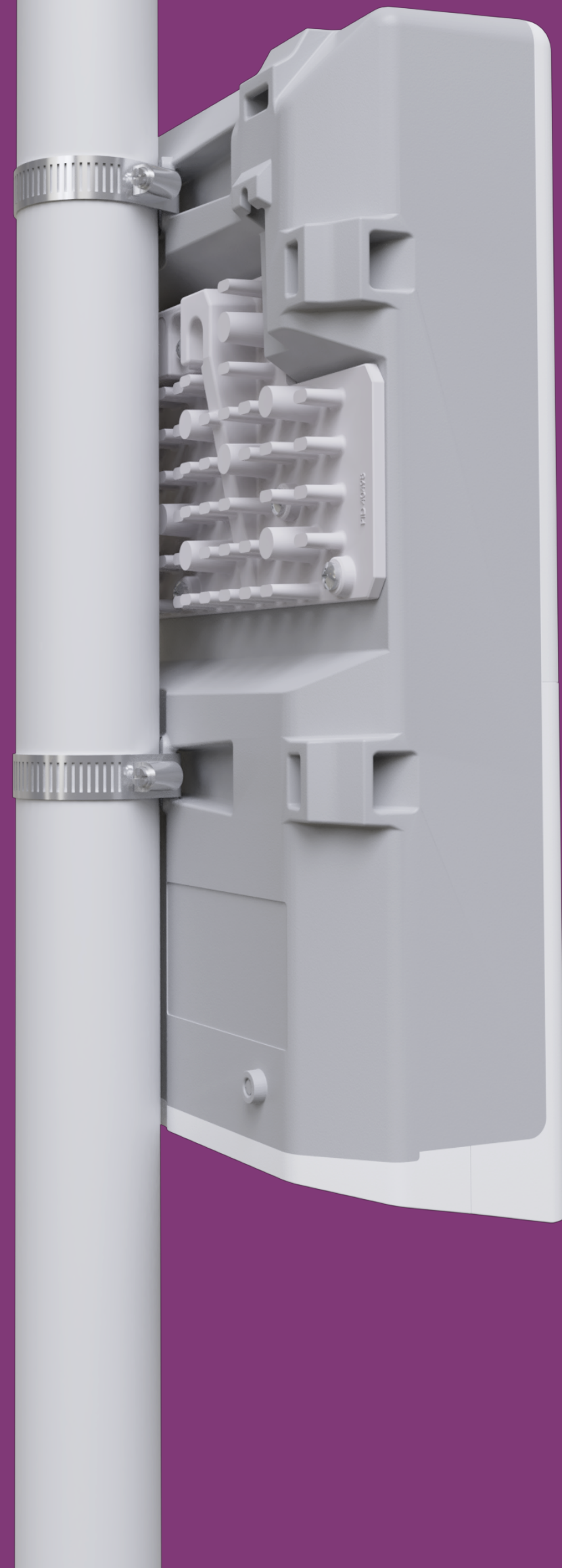
# CRS318-16P-2S+



- 16 Gigabit Ethernet ports
- 2x SFP+ uplinks

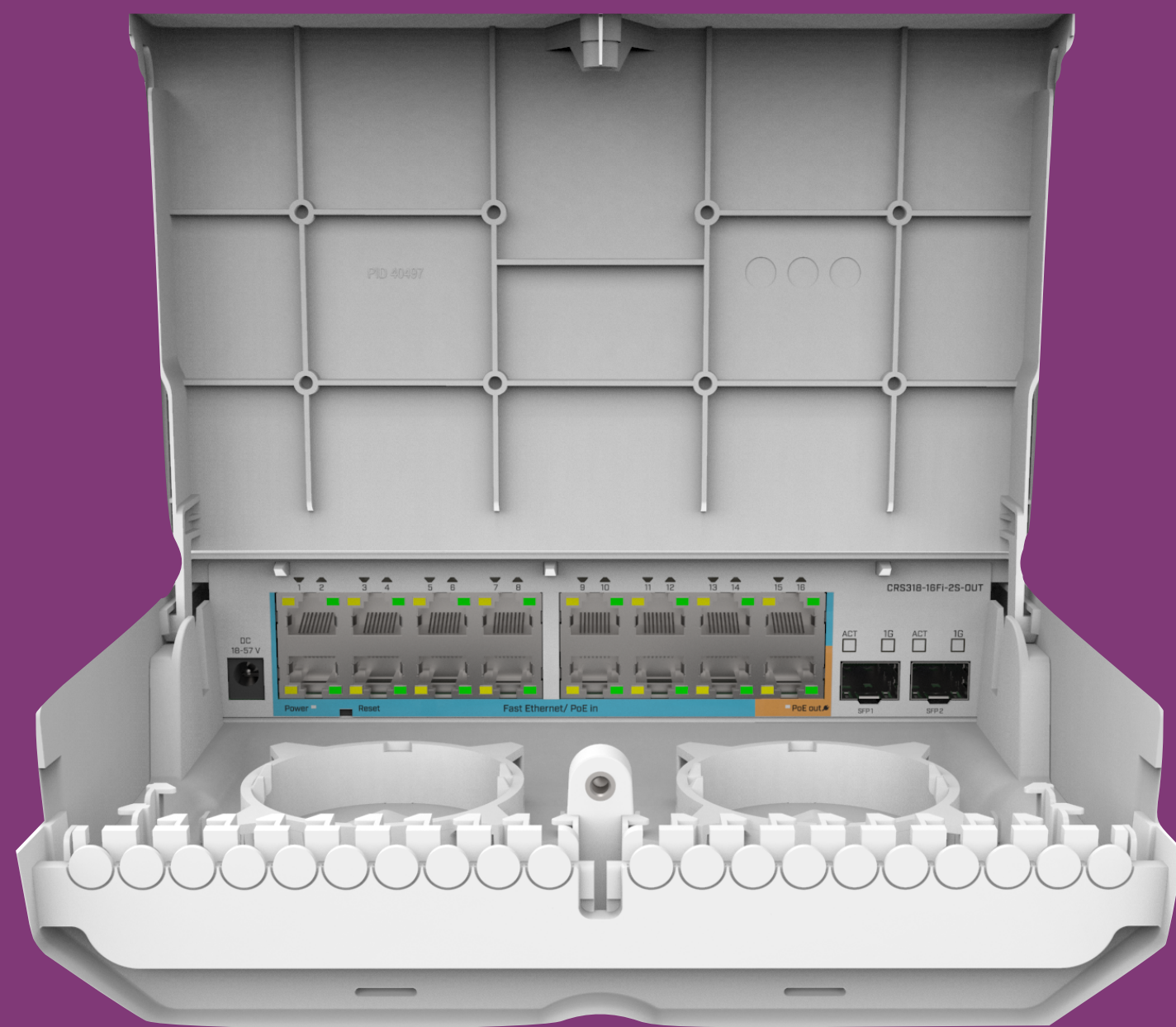


# CSS610-8P-2S+



- SwOS only
- 8 Ethernet ports with PoE out and 2x SFP+ uplinks
- Very affordable pricing
- Will have built in UPS battery support

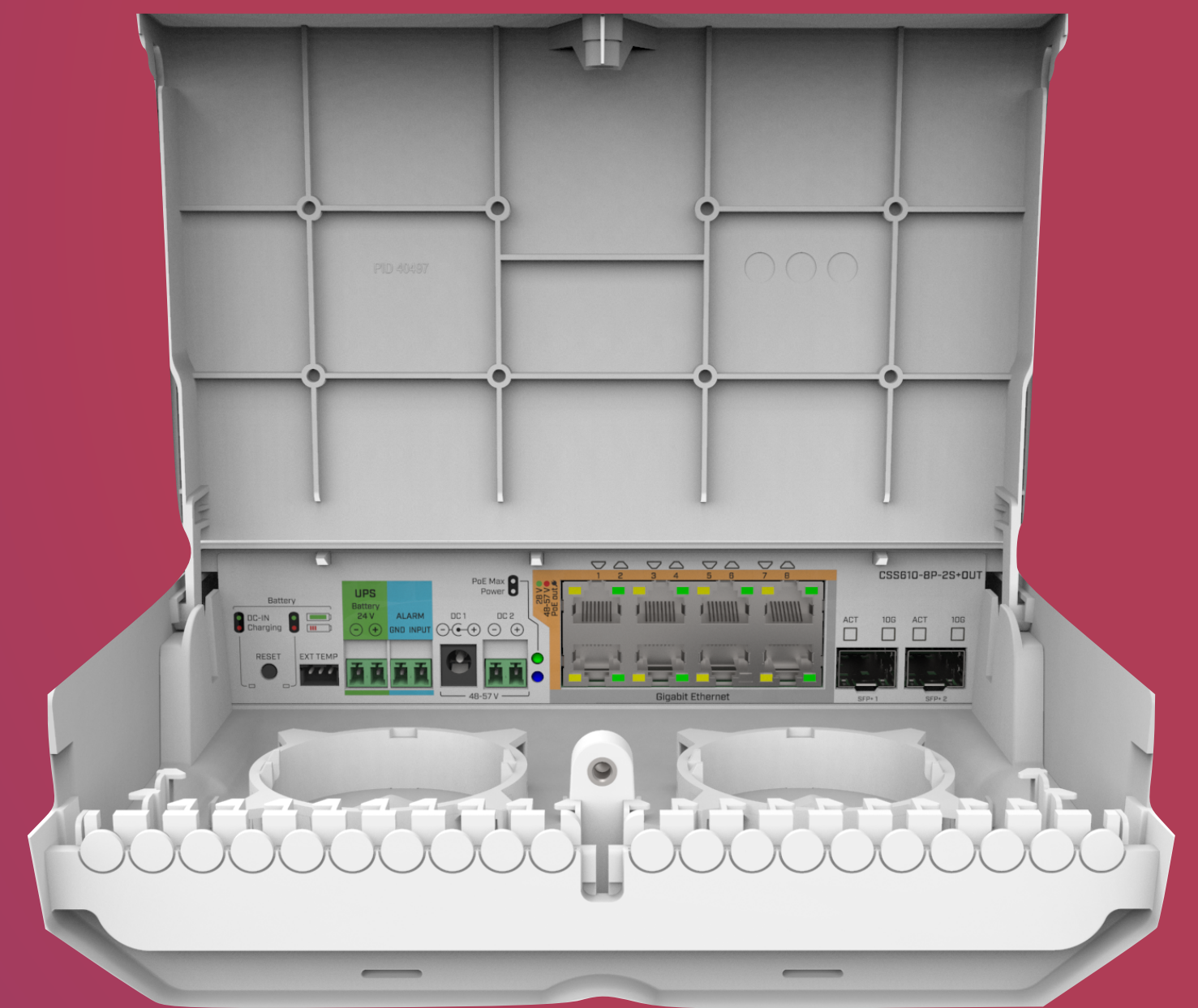




CRS318-16Fi-2S-OUT

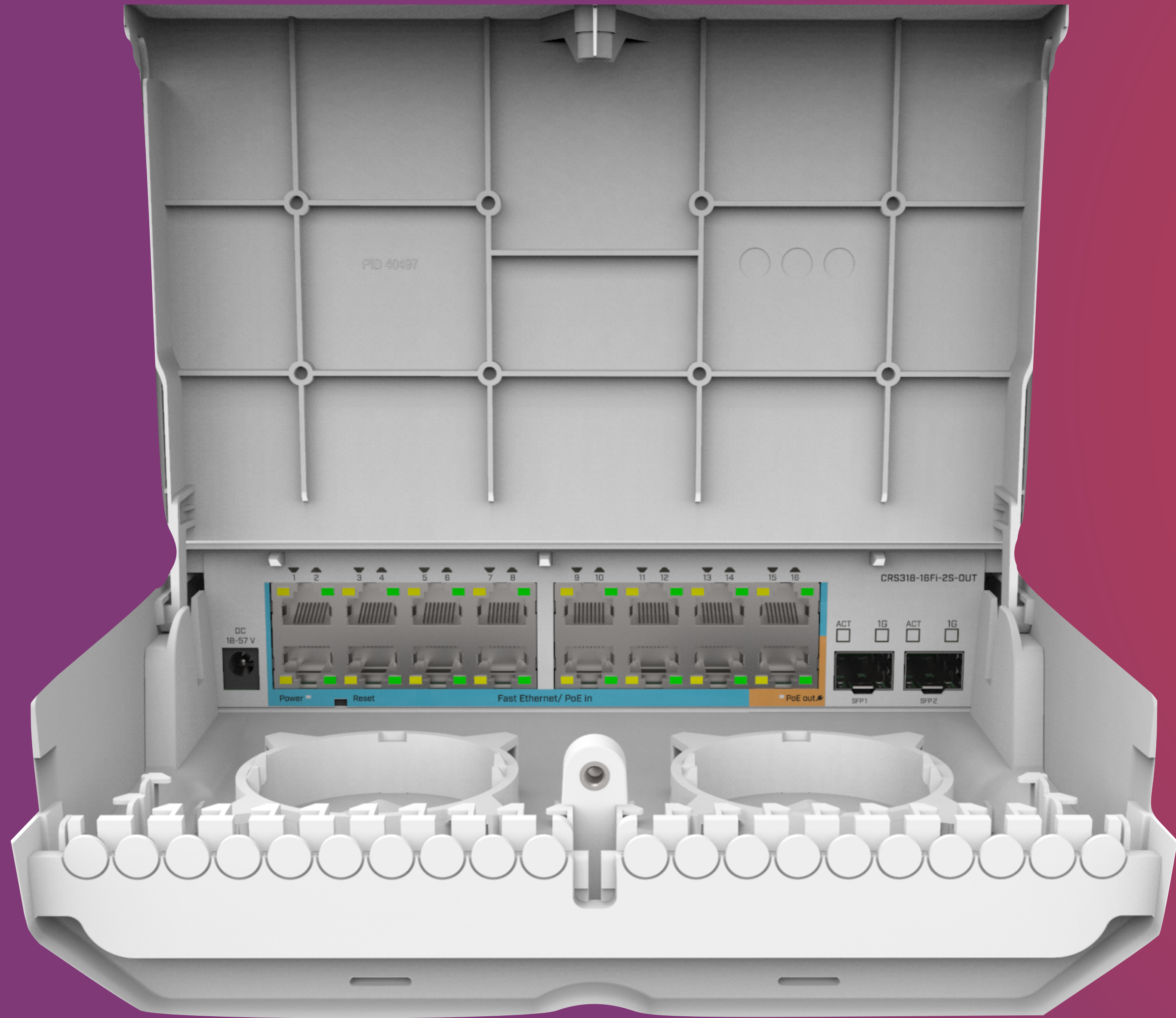


CRS318-16P-2S+OUT



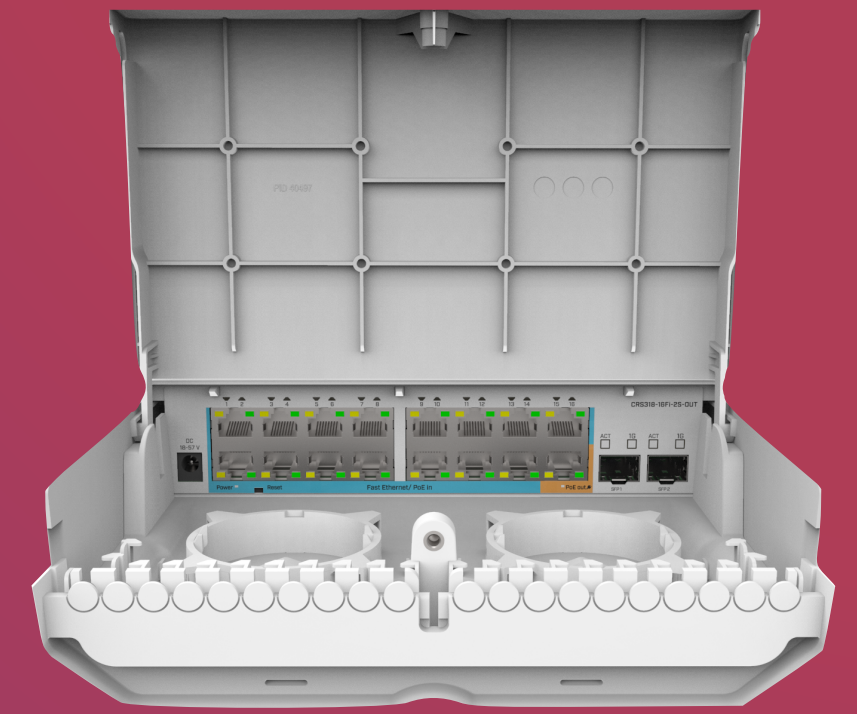
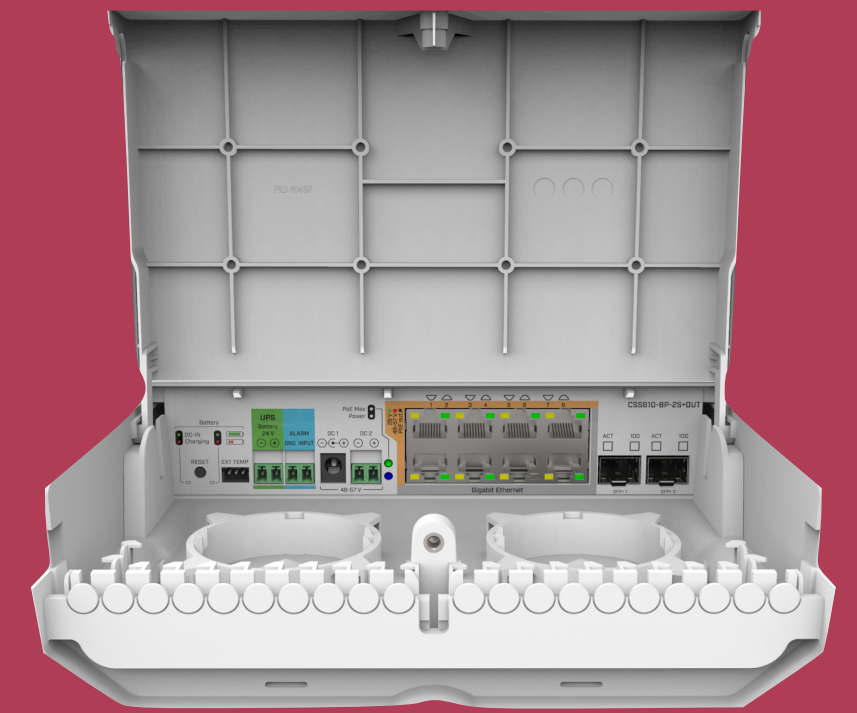
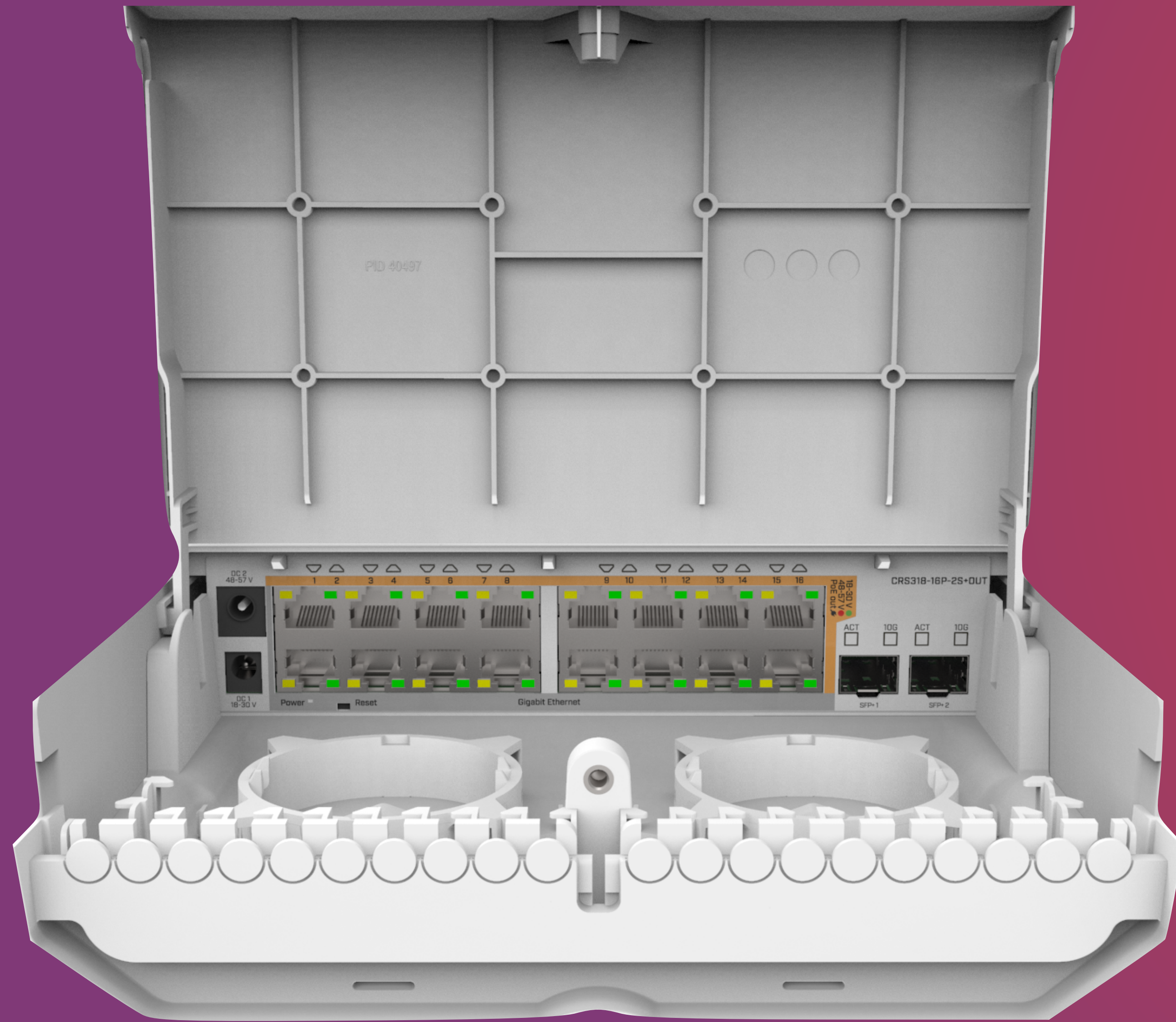
CSS610-8P-2S+OUT





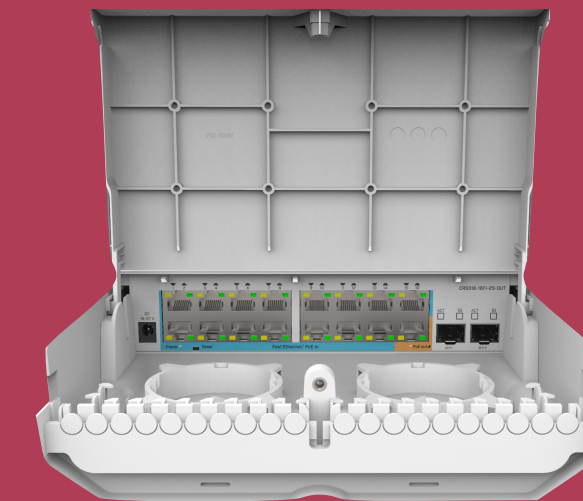
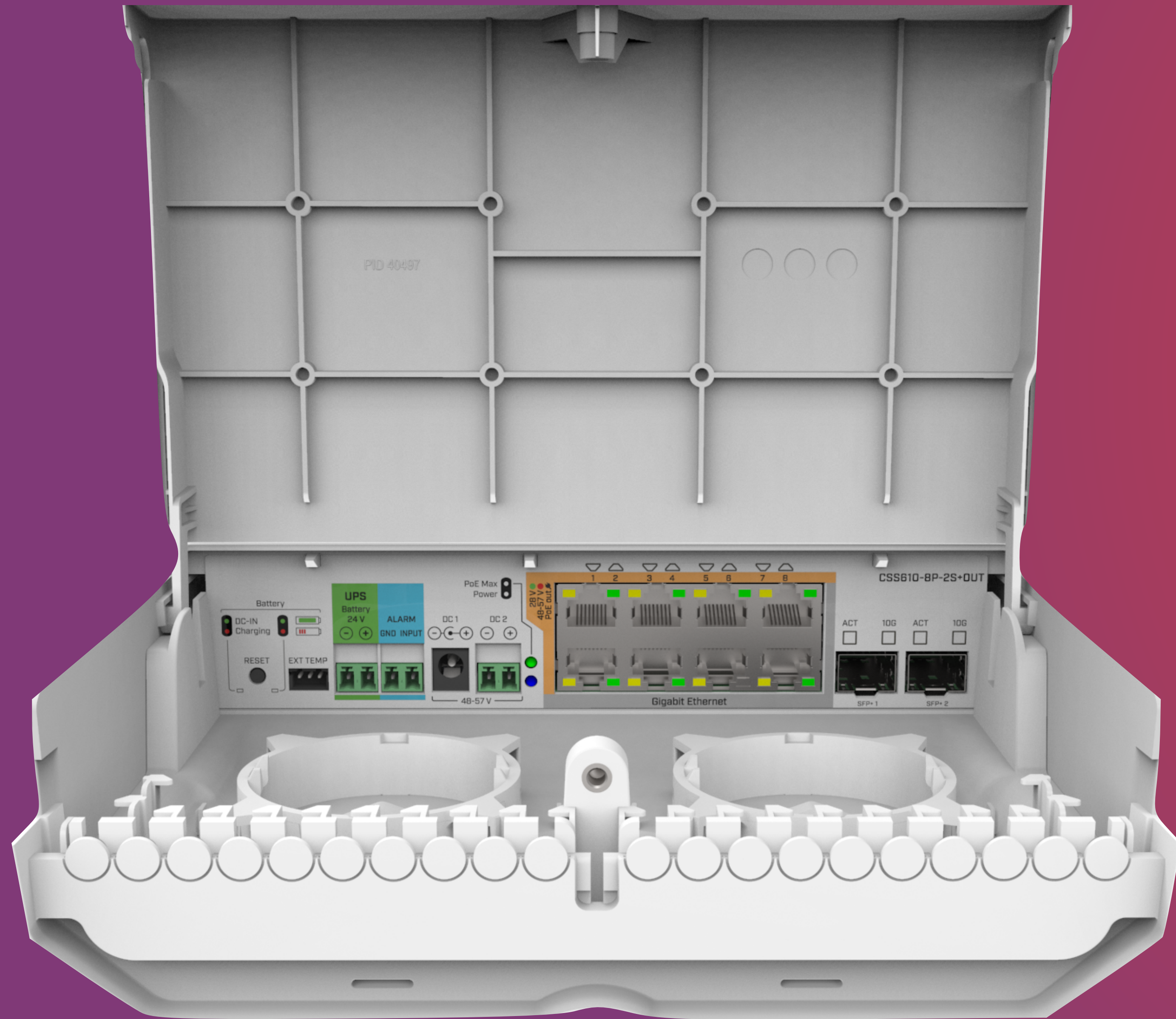
CRS318-16Fi-2S-OUT





CRS318-16P-2S+OUT





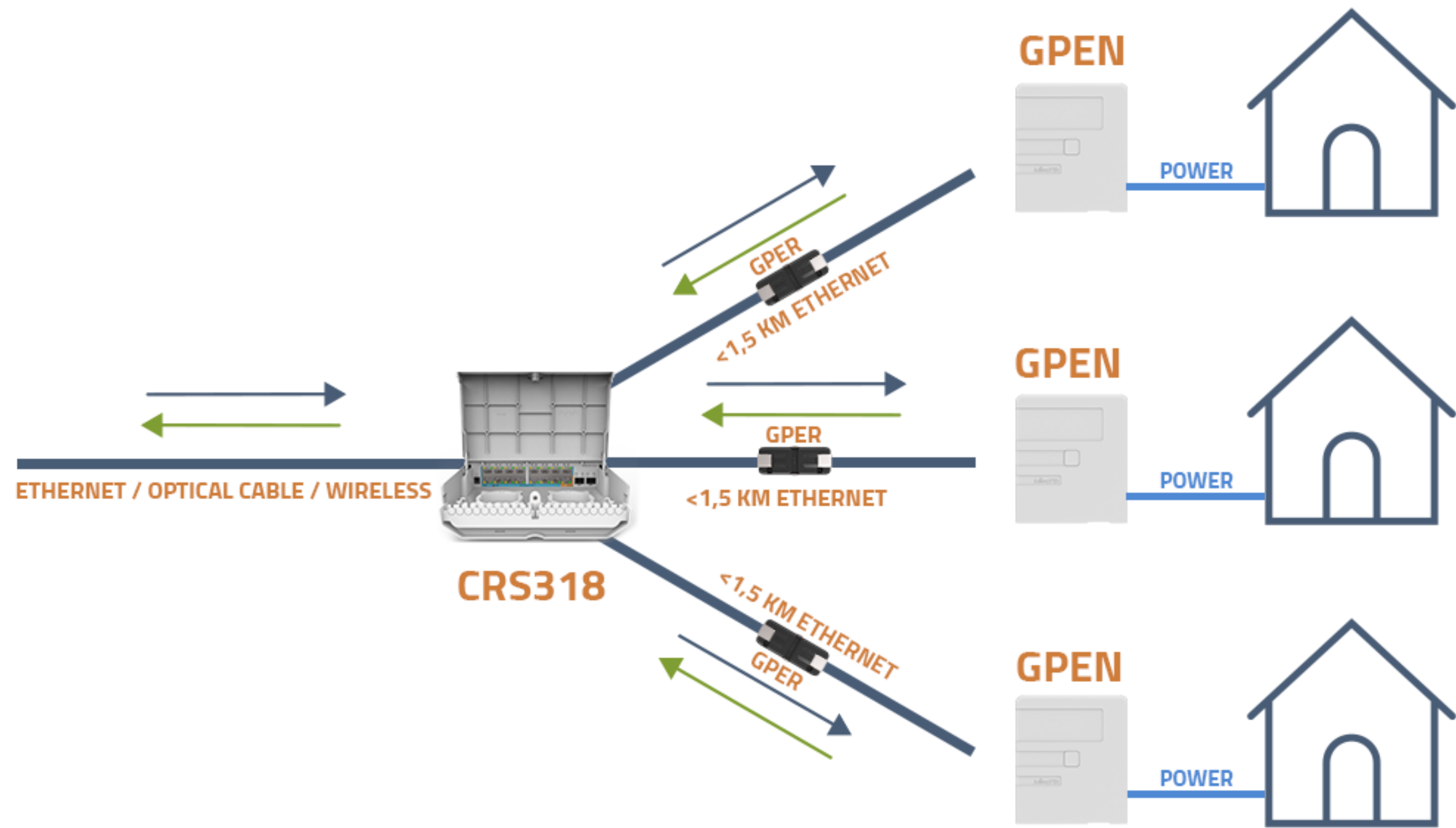
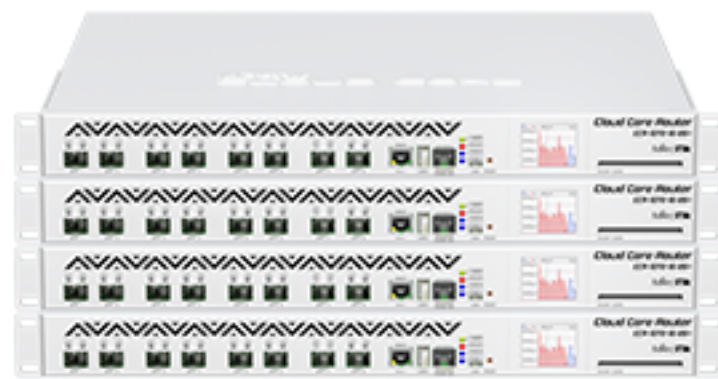
CSS610-8P-2S+OUT



## CENTRAL OFFICE



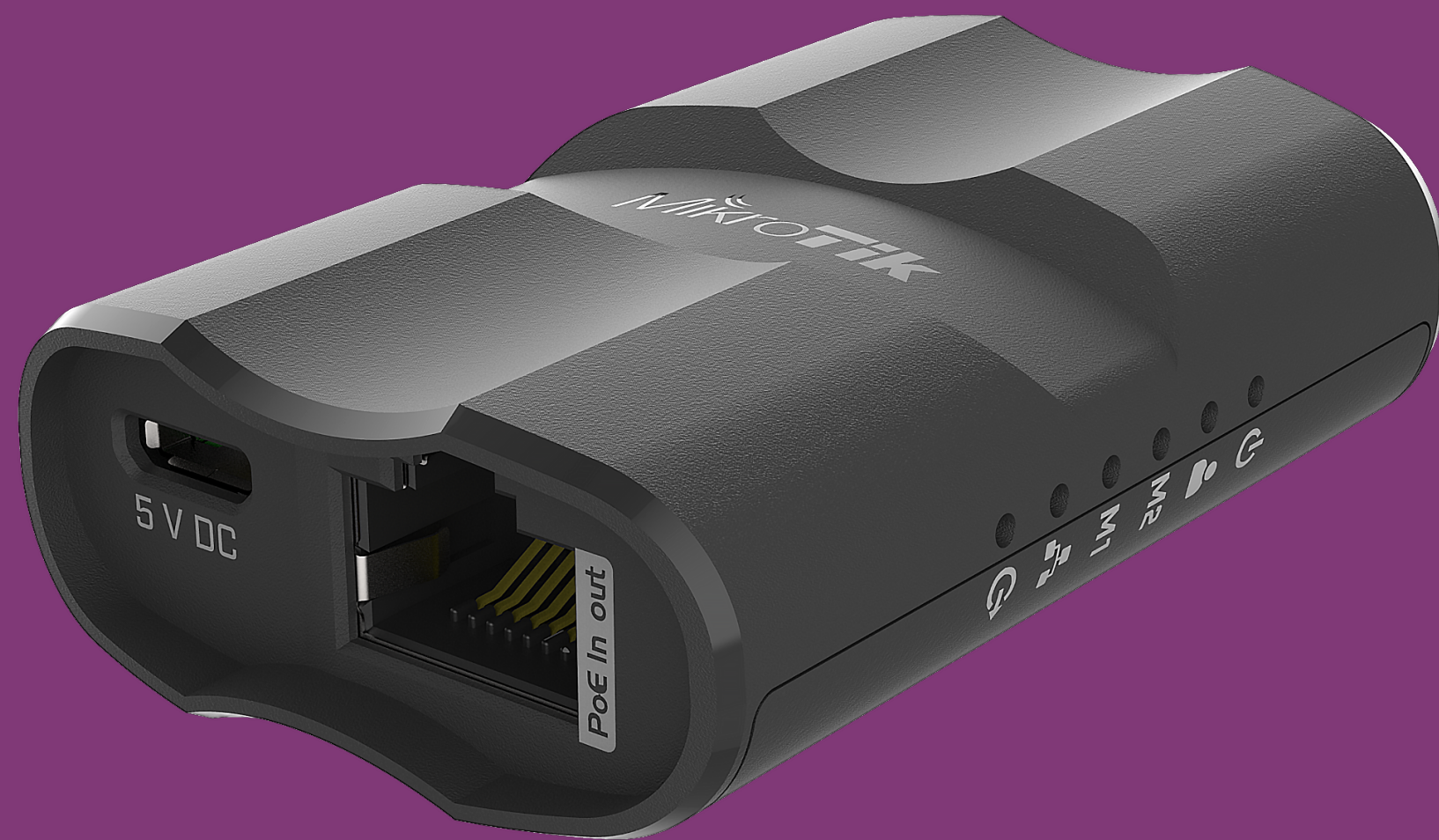
## REGULAR NETWORK





# MQS

- Mobile quick setup
- Administrators friend
- Manage Ethernet only devices from your phone over WiFi
- Can be powered from power bank
- Itself can power an SXT with PoE







# LoRa

- wAP 2 GHz AP with LoRa gateway
- UDP packet forwarder to any public or private network server
- Integrated 2.5 dBi antenna with external antenna support
- LoRa mPCIe Gateway module available



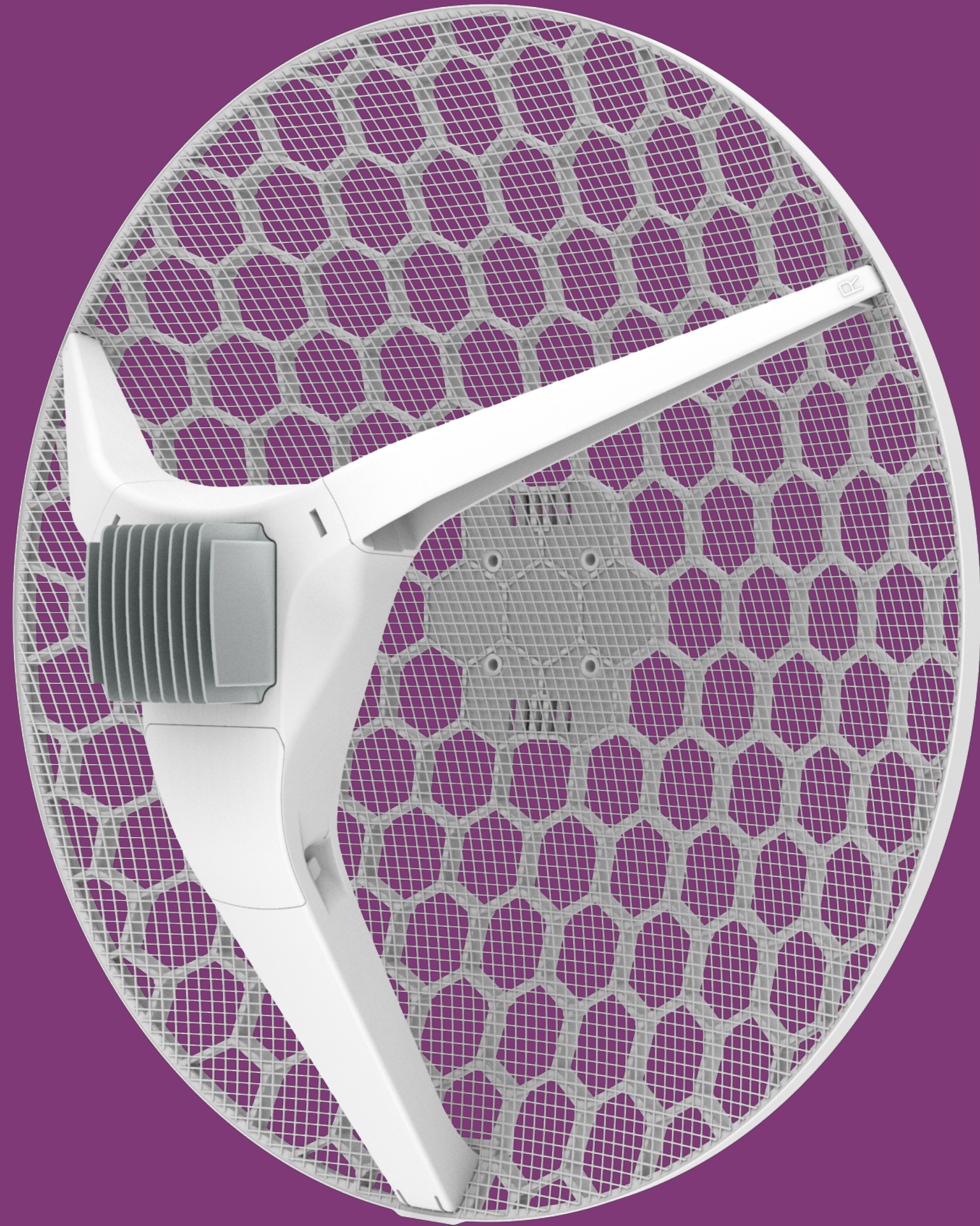
# mUPS pro



- Same form factor as mUPS
- 24 V/48 V battery support
- 24 V/48 V PoE out support
- Managed through web interface



# LHG XL HP



- Simultaneous dual band router
- Gigabit Ethernet and SFP
- Use for failover or higher throughput
- High gain and output power



# PWR Line



- Add PowerLine function via microUSB
- Supported by new hAP lite & mini and mAP family devices
- Connect to PWR Line AP or other router over electrical line











# Audience

- Tri-band 802.11ac home AP with mesh function
- Secondary 5 GHz interface pairs with other units
- Two Ethernet ports
- LTE model with SIM slot and CAT6 modem





Scan me





A stylized world map in shades of red and purple, overlaid with a grid of latitude and longitude lines. A small silhouette of a person is visible in the upper central part of the map.

*MikroTik*