

The MikroTik logo is centered on the page. It features the word "Mikro" in a thin, italicized sans-serif font, followed by a stylized icon of three curved lines above the letter "o". The word "Tik" is in a bold, italicized sans-serif font. The entire logo is rendered in a dark gray color and has a subtle reflection effect below it.

MikroTik

MikroTik user meeting



What do we do?

We create networks

Our products include

RouterOS

built and advanced for more than 20 years

RouterBOARD

Wireless outdoor, indoor, Ethernet routers

CRS

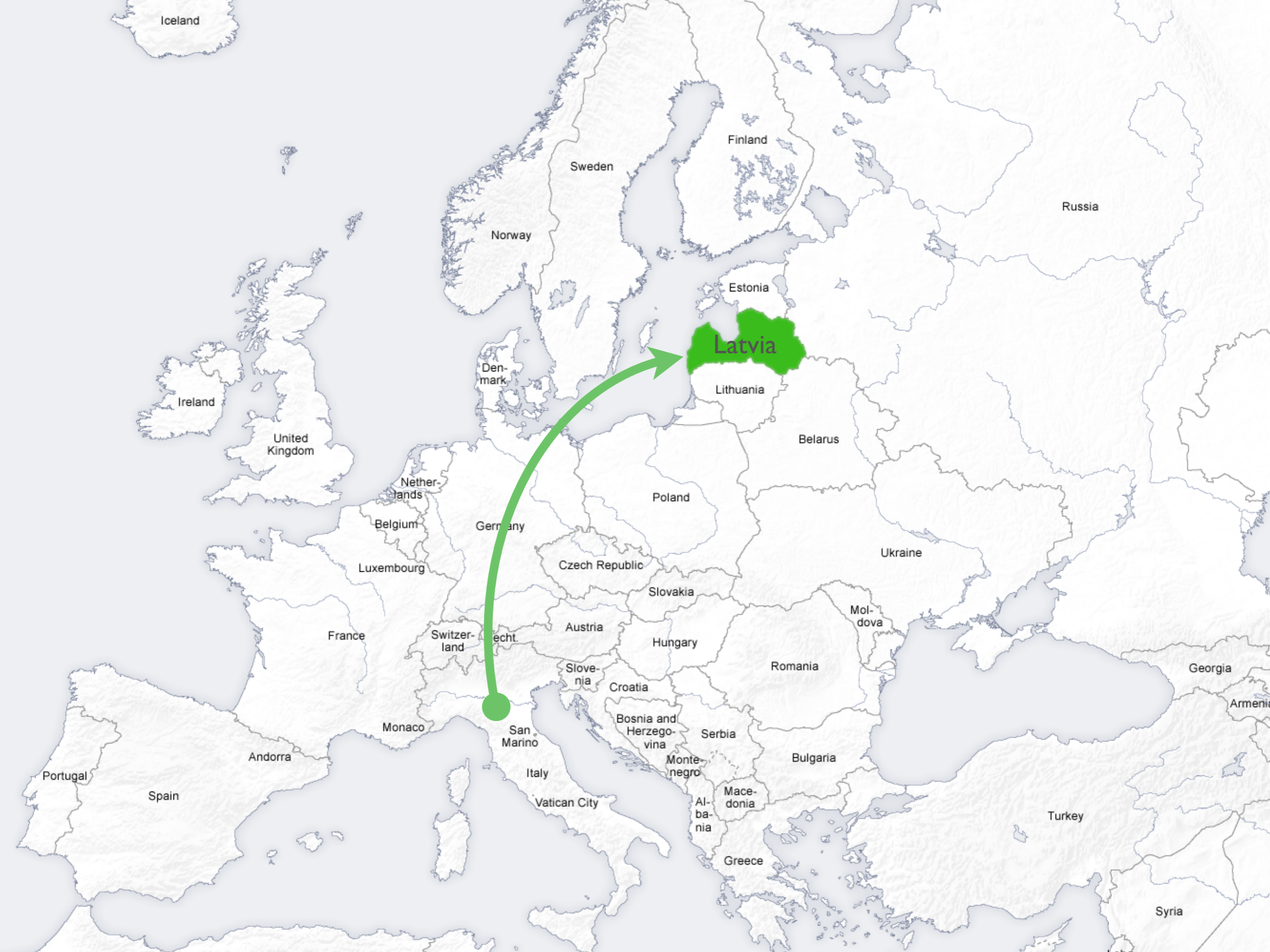
Switches with RouterOS

CSS

Switches with SwOS

MikroTik

- Established 1996
- RouterOS created in 1997
- RouterBOARD created in 2002
- First MUM event in Prague 2006
- MUM in Indonesia had 2500 people
- 34 events in 2016



Iceland

Finland

Sweden

Russia

Norway

Estonia

Latvia

Lithuania

Denmark

Ireland

United Kingdom

Belarus

Netherlands

Poland

Belgium

Germany

Ukraine

Luxembourg

Czech Republic

France

Switzerland

Liechtenstein

Austria

Hungary

Moldova

Georgia

Monaco

San Marino

Slovenia

Croatia

Romania

Armenia

Portugal

Andorra

Spain

Bosnia and Herzegovina

Serbia

Bulgaria

Italy

Montenegro

Vatican City

Albania

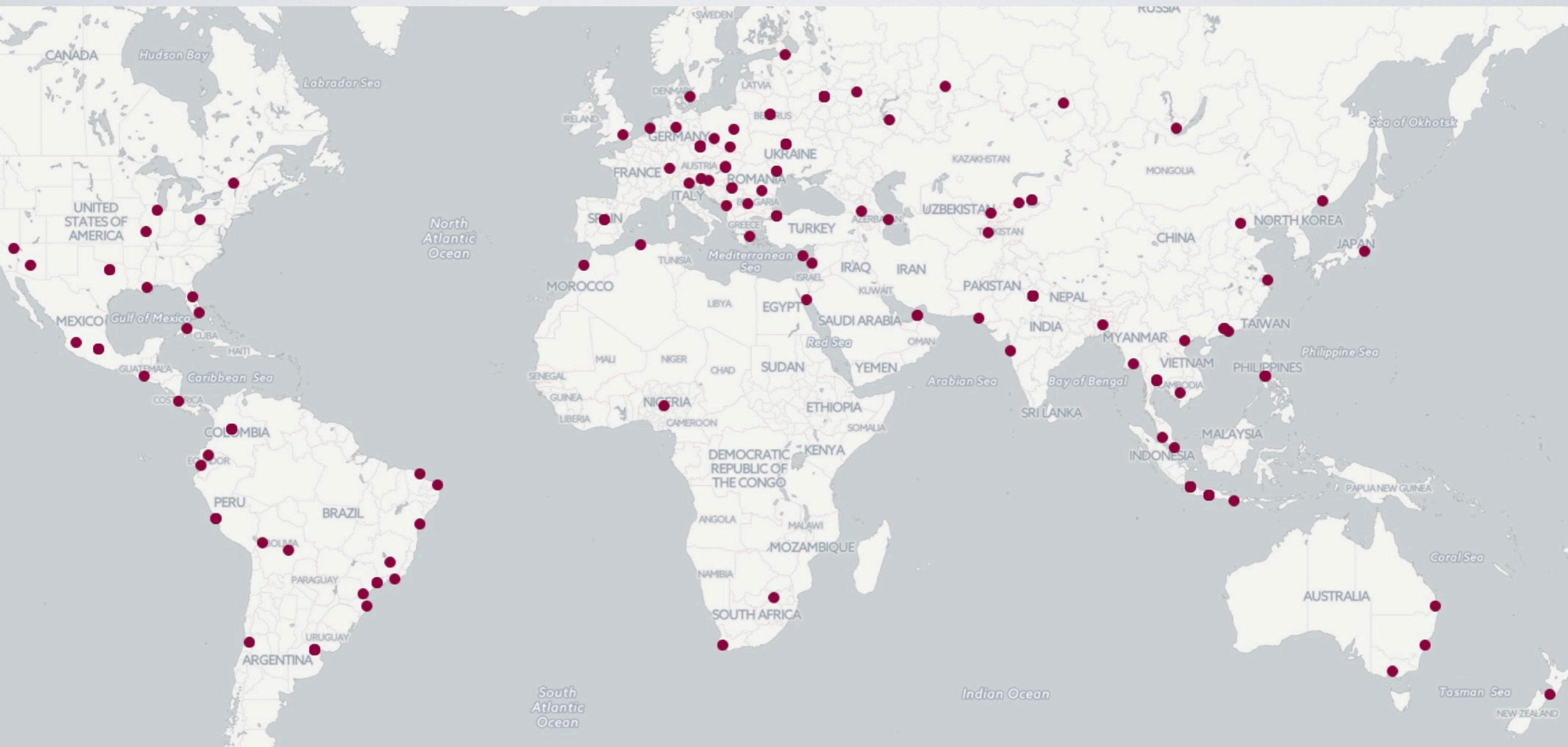
Macedonia

Turkey

Greece

Syria

no matter where you are



Record number of MikroTik staff available!

A red rectangular button with rounded corners, centered on the page. The word "STAFF" is written in white, uppercase, sans-serif font in the center of the button.

STAFF


Registration	WiFi	Ethernet	Sales
Martins	Uldis	Janis M.	Janis J.
Kaspars	Antons	Emils	Edmunds
Normunds	Arturs	Janis B.	Karlis

John Tully (CEO)

Arnis Riekstiņš (CTO)

shall we?

Just kidding!

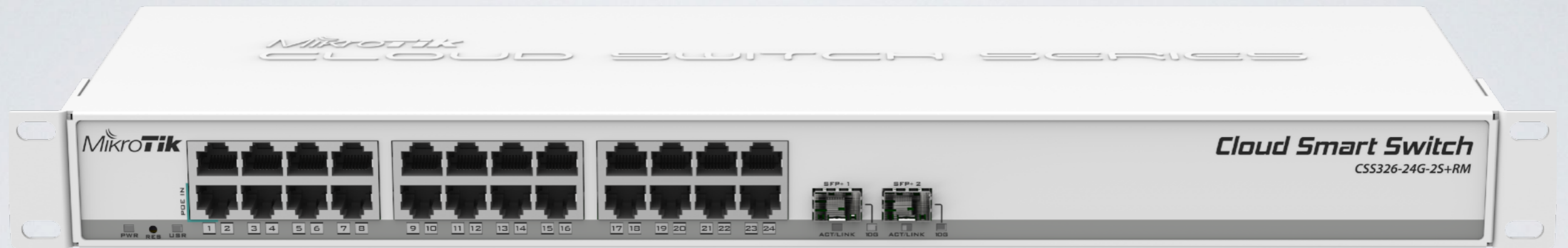
Happy April fools! 

cAP lite

- If you haven't, open your bag
- Small and light 2GHz AP
- Case can be changed
- Print your own cases
- Perfect for hotel, public areas and extending networks in your house





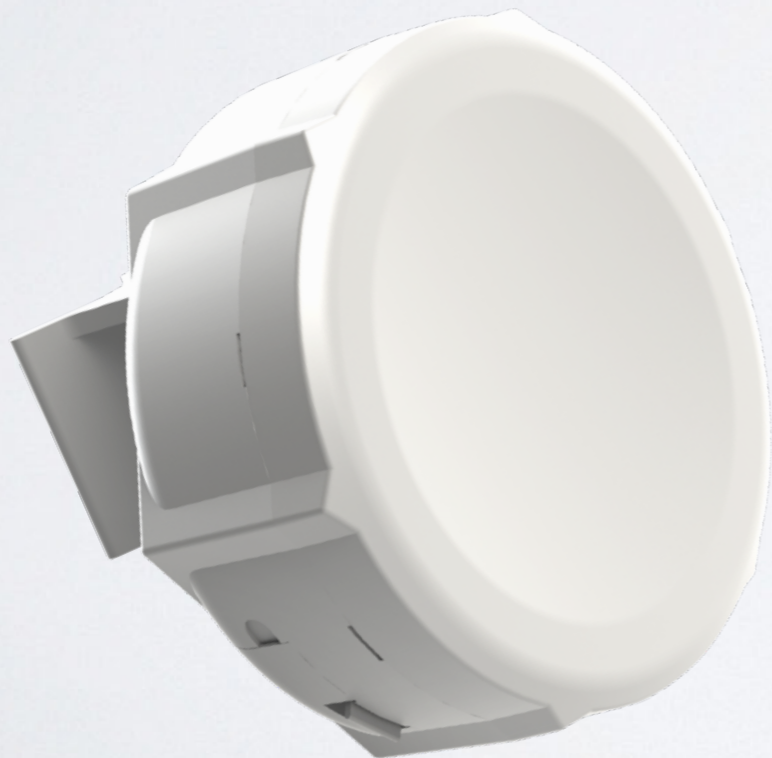


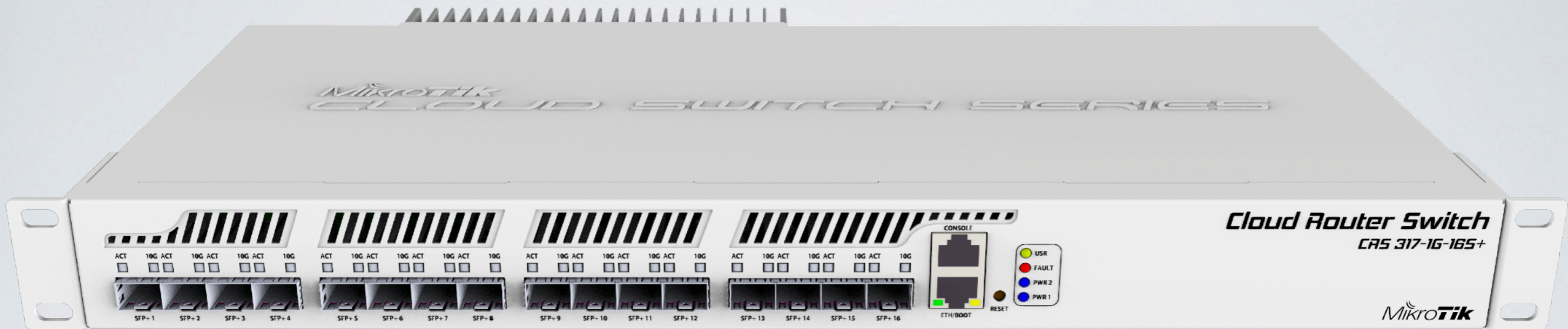
CSS326-24G-2S+RM

Multiport SwOS switch

DynaDish 6 and SXT 6

- Great for use in less used 6GHz spectrum
- Same familiar designs





CRS317-1G-16S+

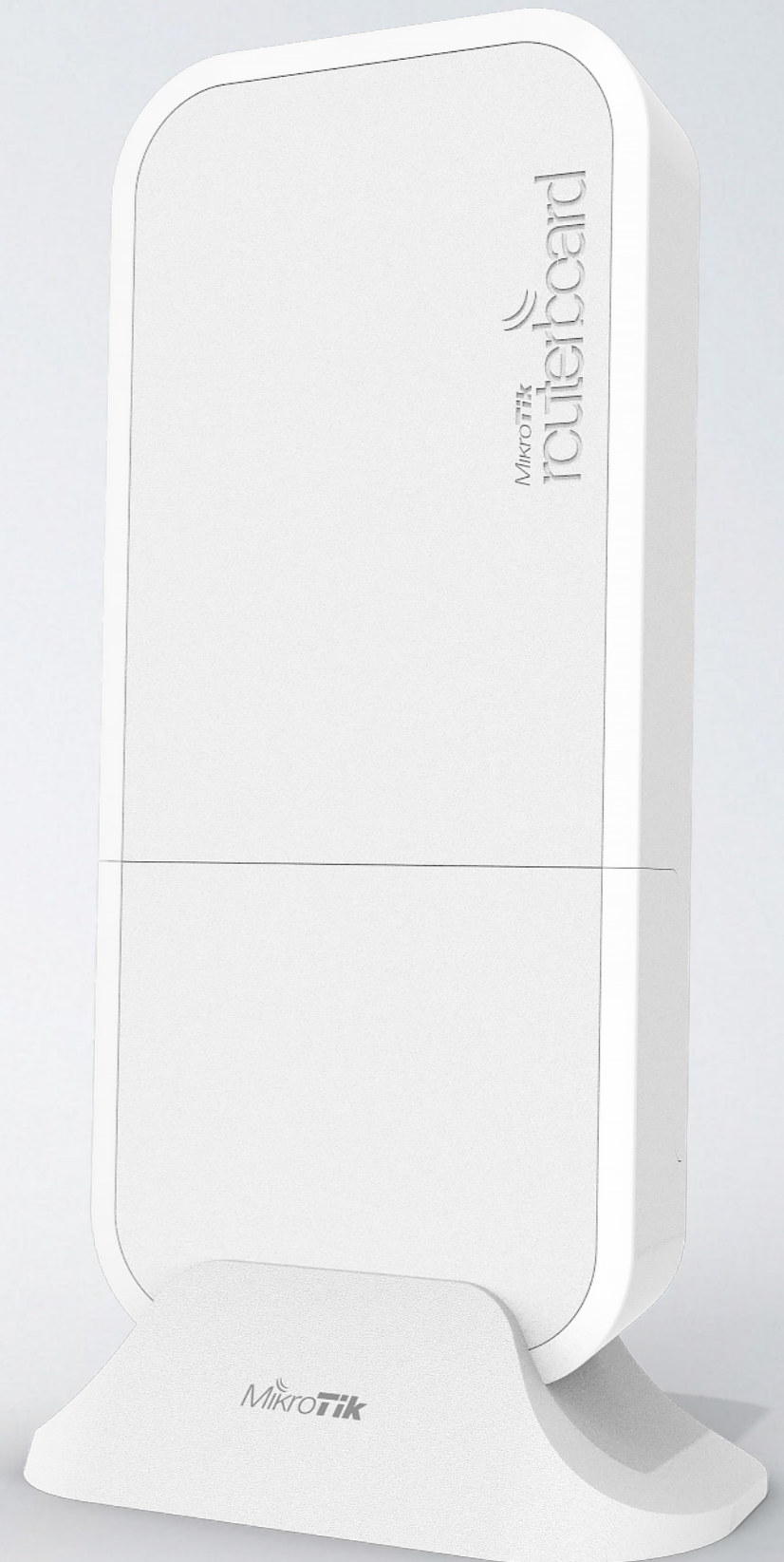
high performance SFP+ switch

CRS317-1G-16S+

- 16 SFP+ ports
- Next generation switching chip
- Wire speed for all 10GbE ports
- Hardware-based Spanning Tree Protocol
- Dual boot SwOS or RouterOS

wAP LTE kit

- Wireless AP for LTE
- EU version supports LTE bands 1,2,3,7,8,20,38,40
- 2G, 3G, LTE supported
- Optional external antennas
- Comes with a stand mount

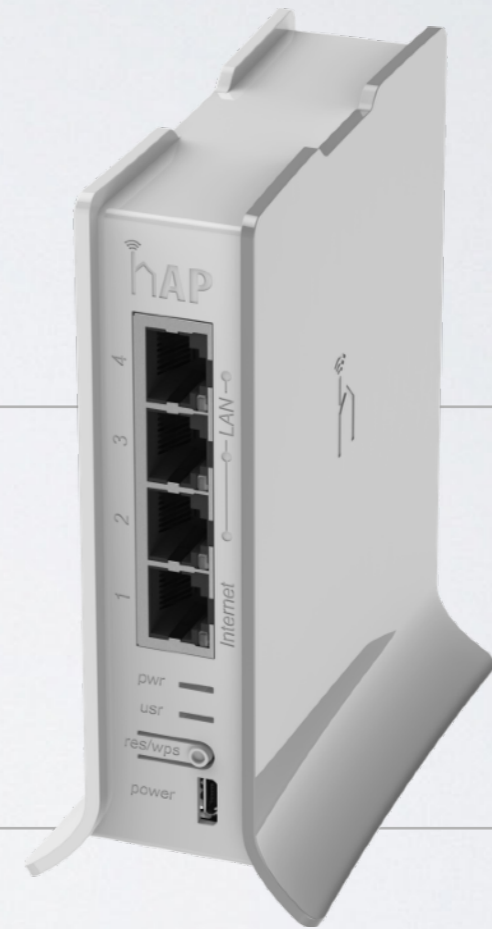


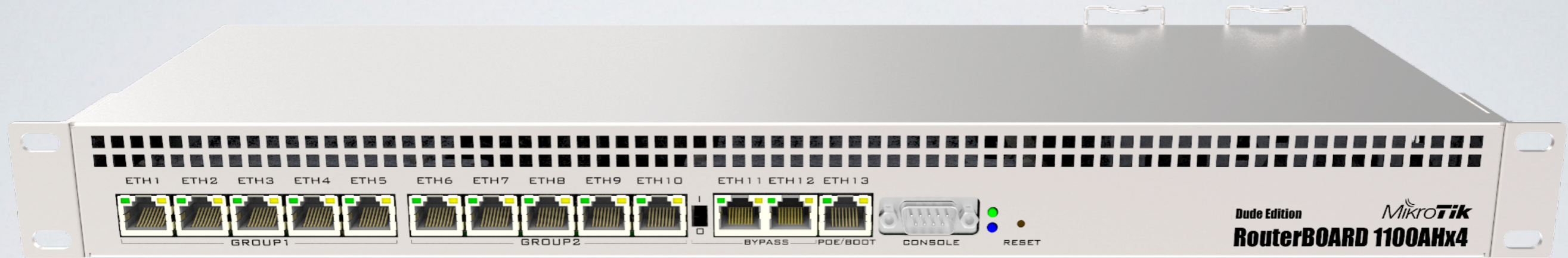
hAP mini

- Tiny 2GHz AP with three ports
- Upright design in new colours
- Only 8cm tall
- Two LAN ports, one WAN
- Configure differently if needed



8cm



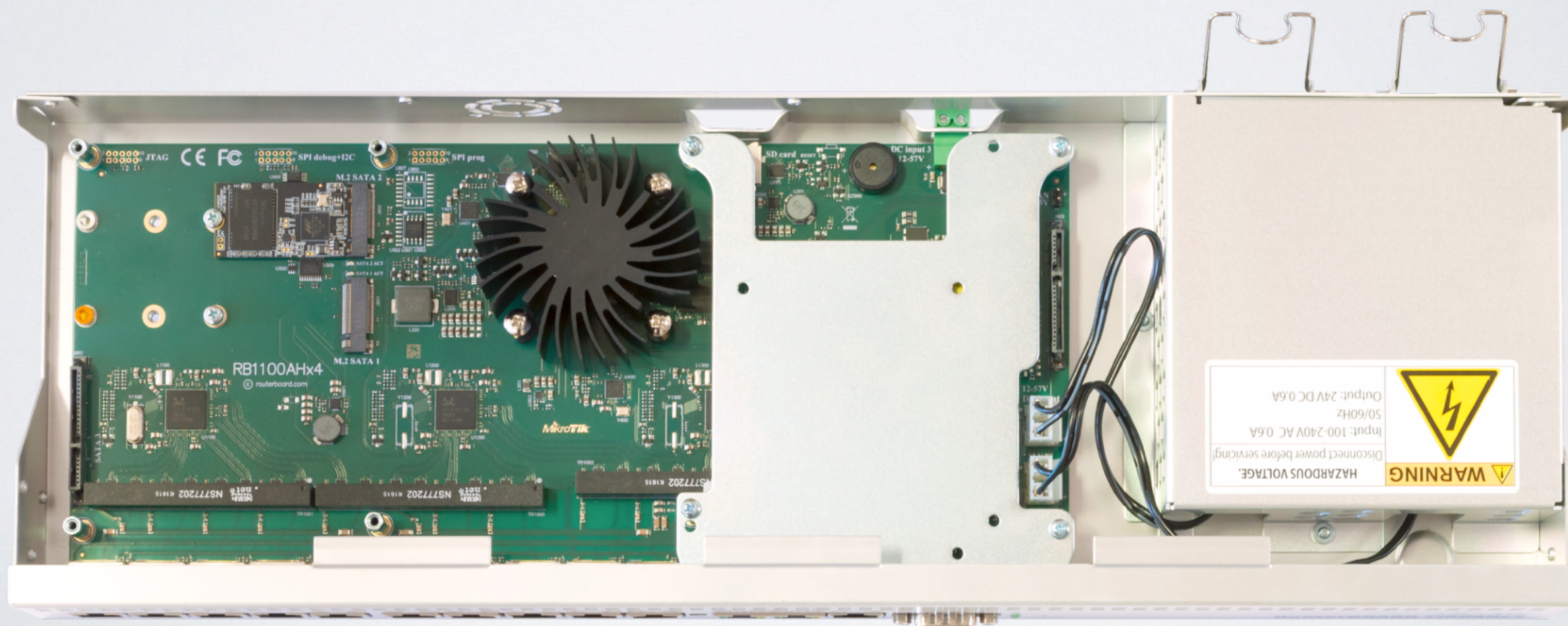


RB 1100AHx4

The timeless classic upgraded
with a new quad core CPU and more

Annapurna Alpine AL21400 CPU with four Cortex A15 cores clocked at 1.4 GHz

- Two SATA3 ports
- Two M.2 ports
- 60GB SSD included
- Accelerated IPsec
- -48V DC telecom power
- Dual PSU





- 5.5 million PPS
- 7.5Gbps
- IPsec up to 2.2Gbps with AES 128
- Overclock up to 2GHz

Two editions

- **RB1100AHx4**
- **RB1100AHx4 Dude edition**
includes 2x M2 and 2x SATA3 ports

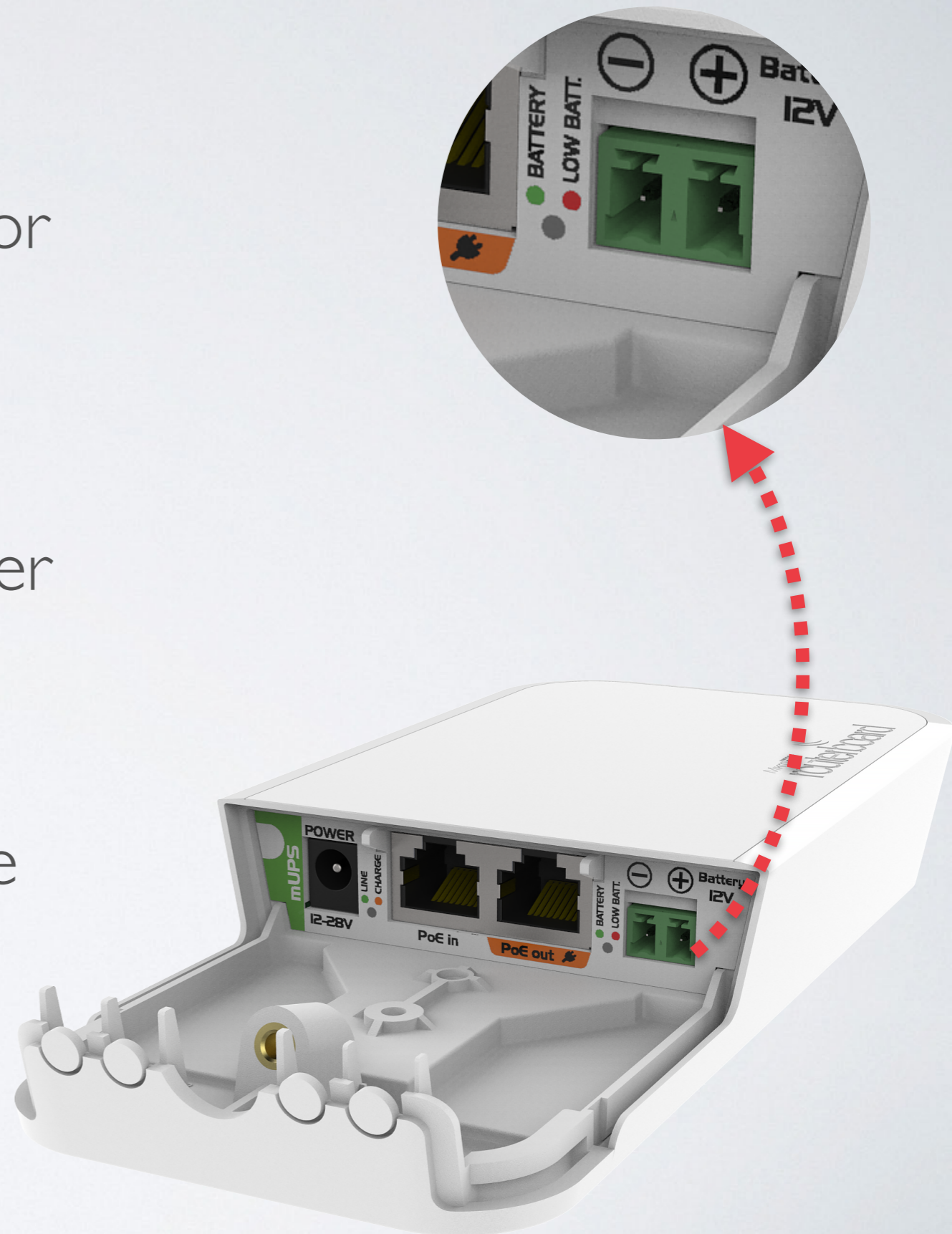
PowerBox Pro

- Gigabit ethernet ports
- PoE output for your CPEs
- Same as hEX PoE
- Supports 802.3af/at
- SFP for fiber to tower
- Improved design



mUPS

- Just like a smart PoE injector
- Battery connector for 12V batteries (external)
- Battery kicks in when power is lost
- Step up converter keeps device going even if Voltage differs
- Can charge and monitor



LtAP mini

- 2GHz AP in a rugged case
- miniPCIe for LTE
- Built in GPS
- Serial port for other devices
- Perfect for cars or outdoor mobile applications





LtAP

- 2x miniPCle
- Built in 2.4GHz AP
- MMIPS Mediatek CPU 880MHz
- 2x MMCX connectors
- Built in GPS



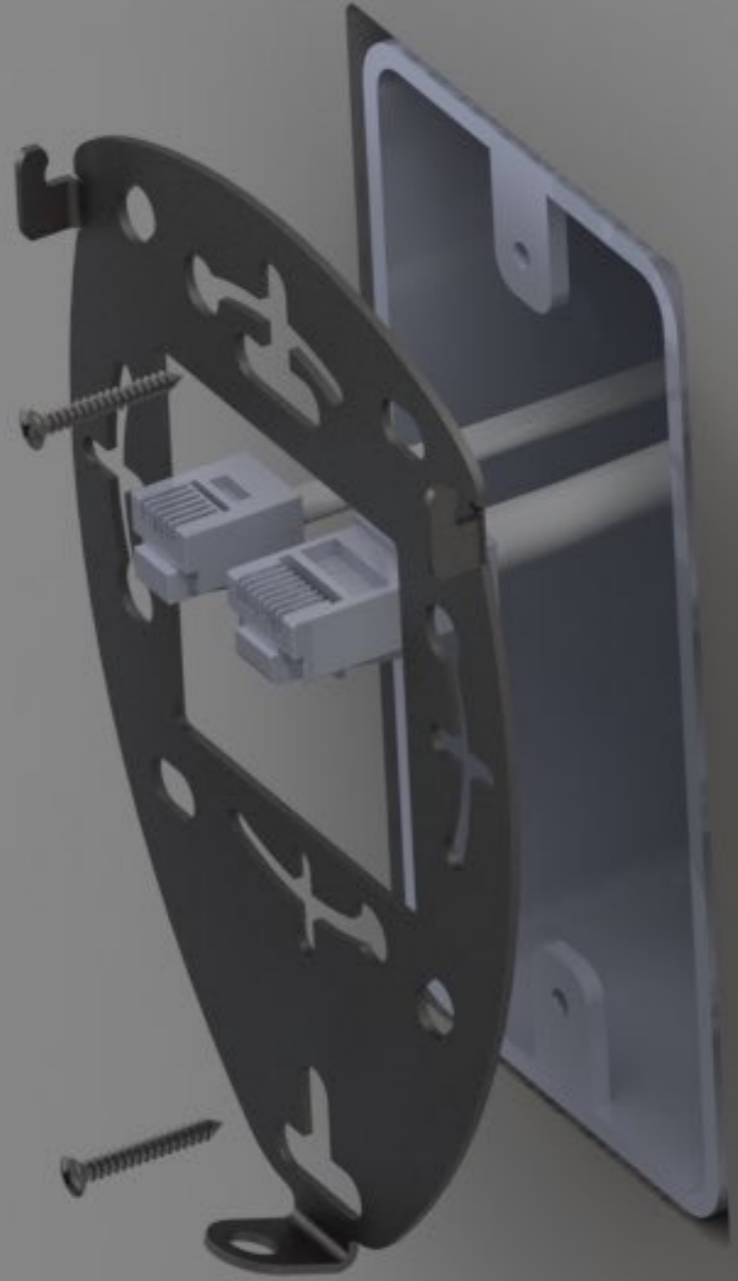


wsAP ac lite

- Mount into standard EU or US electrical sockets
- Dual band ac
- Phone jack passthrough
- Two LAN ports
- USB for charging phones

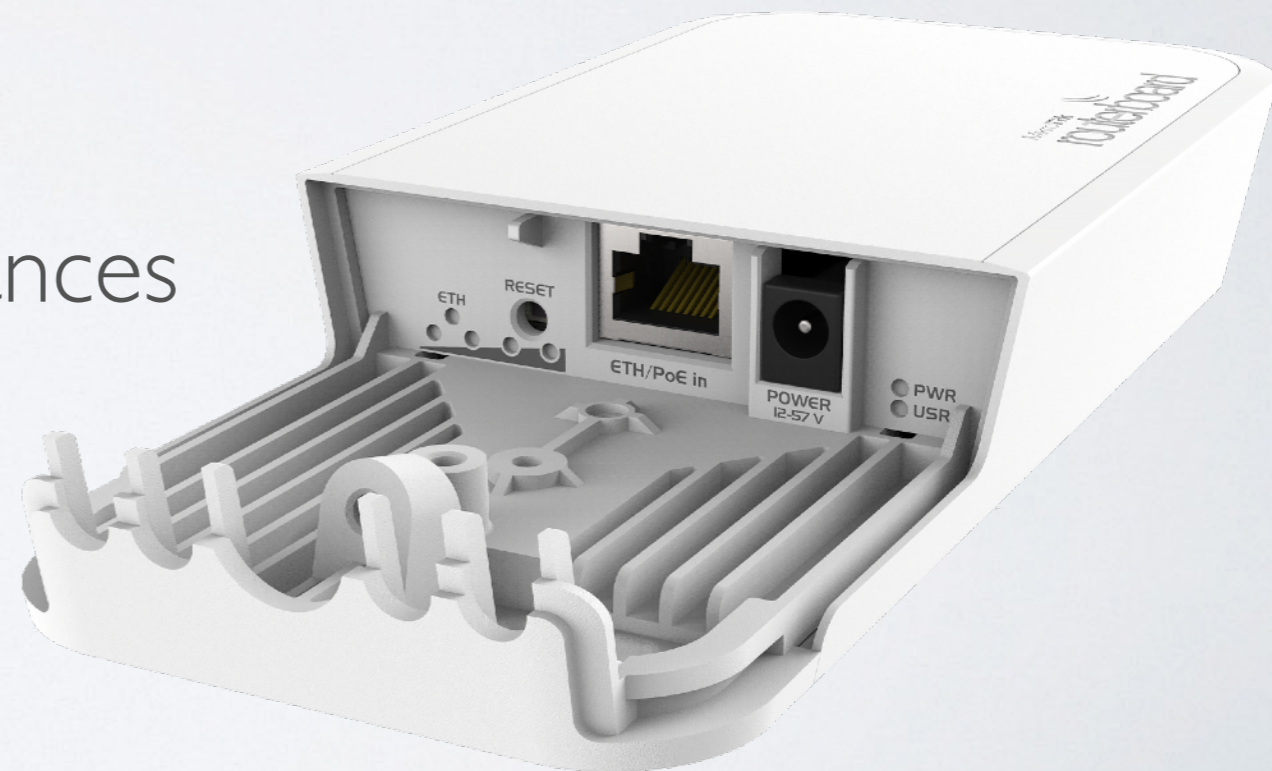






wAP 60G

- 1 Gbit full duplex (wire speed)
- “Wireless wire” kit preconfigured
- Works in 60GHz spectrum
- Quad-core ARM CPU
- Targeted for up to 100m distances
- Q2/Q3



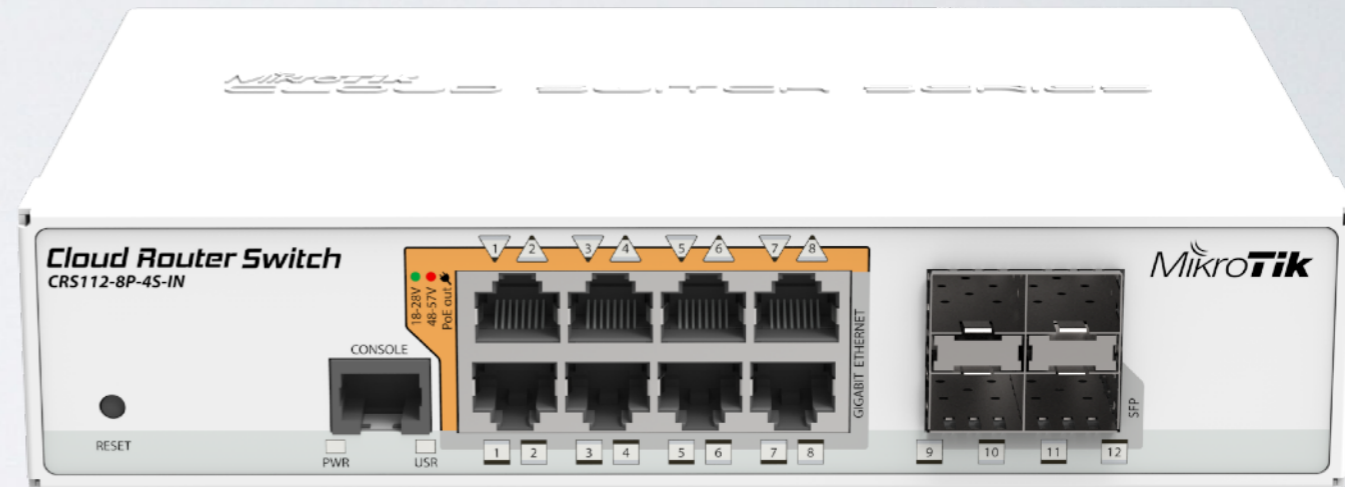
LHG 60G

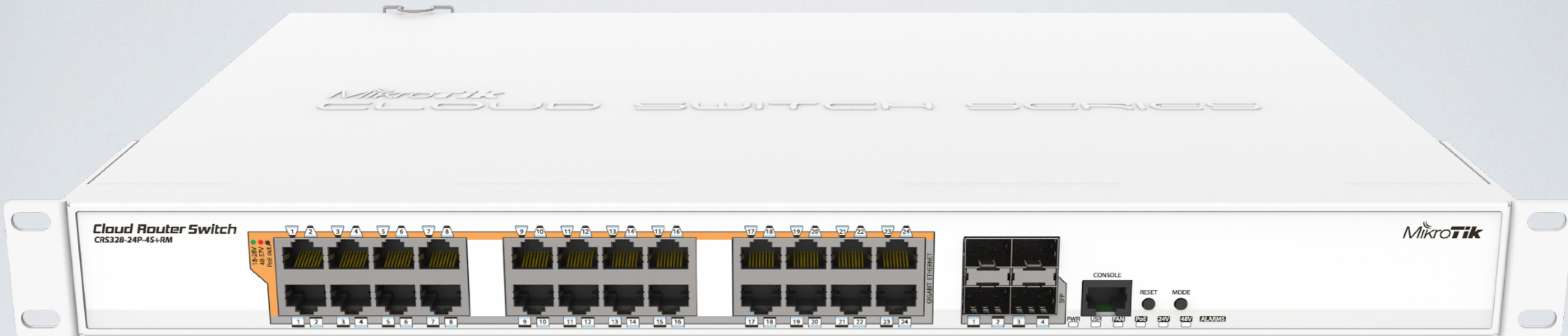
- 1 Gbit full duplex (wire speed)
- Works in 60GHz spectrum
- Familiar LHG design
- Quad-core ARM CPU
- Low cost and low weight
- Longer distance than 100m
- Q2/Q3



CRS112-8P-4S

- PoE out 802.3af/at
- Eight gigabit ports
- Separate PSU for passive or 802.3af/at PoE out
- Low voltage PSU included
- Per port auto detection of PoE standard
- Four SFP ports





CRS328-24P-4S+RM

PoE out switch

CRS328-24P-4S+RM

- Dual boot SwOS or RouterOS
- 24 ports with PoE out function
- Supports 802.3af/at output
- Per port auto detection of PoE standard
- Four SFP+ ports for 10GbE
- One 120/220V IEC connector

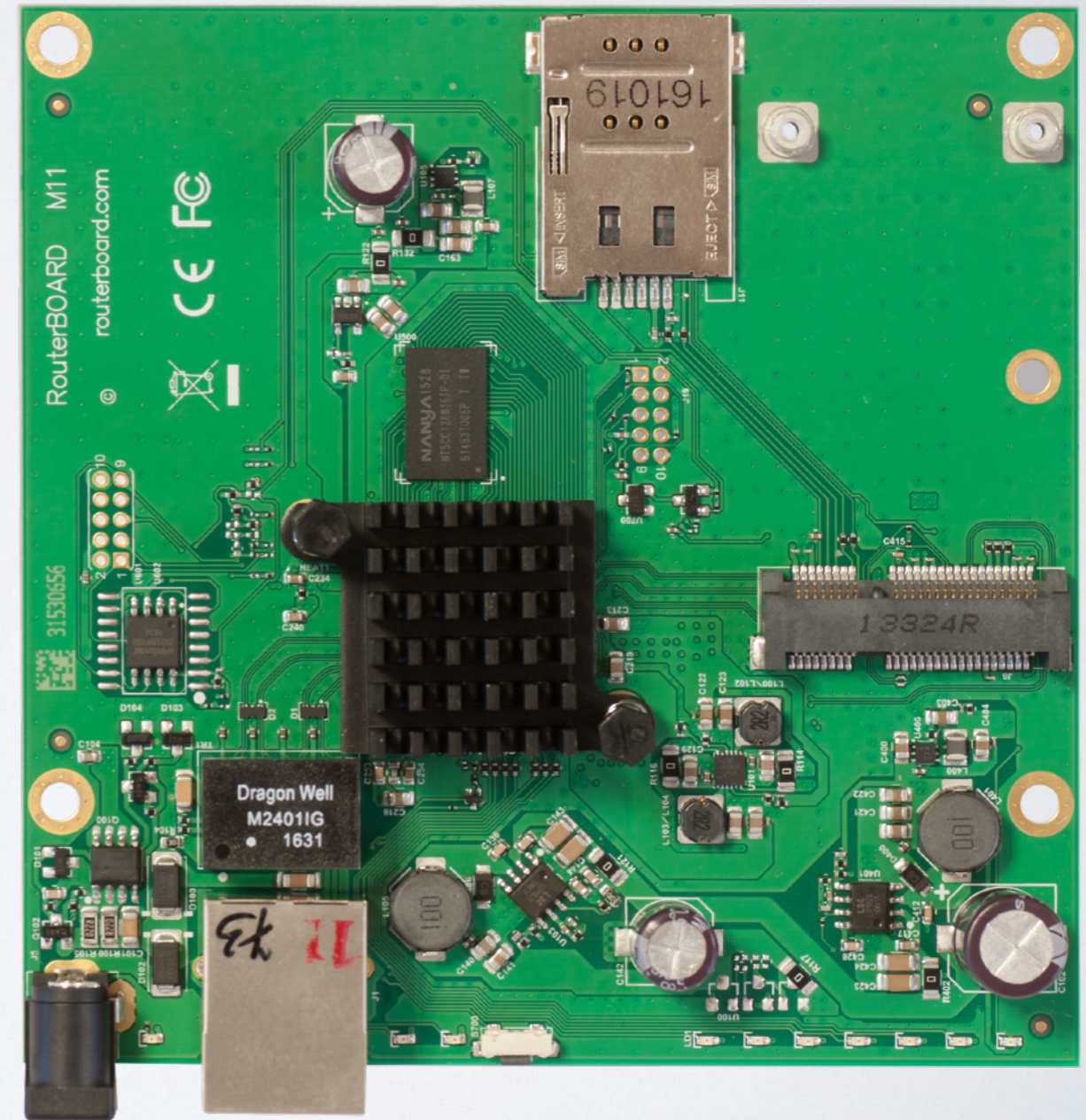
Woobm

- Wireless out of band management (Woobm)
- Plug into a device to have a new management AP
- Can work as client to use in CCR rackmounts



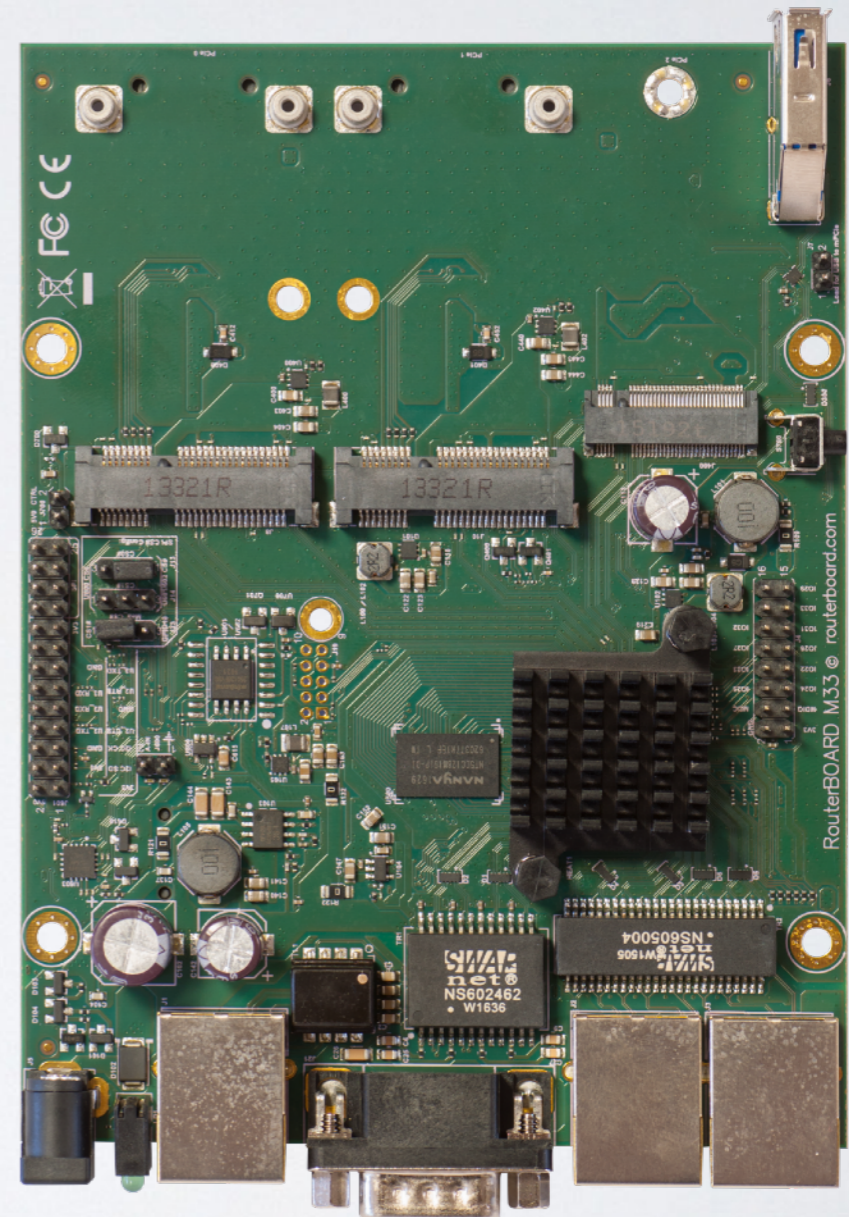
M11

- Four core 880MHz CPU
- 1 miniPCIe slot
- 1 Gigabit ethernet



M33

- Four core 880MHz CPU
- 3 Gigabit ethernet
- 2 miniPCIe slots
- 1 M.2 slot
- USB 3.0 and Serial port



The logo for MikroTik, featuring the word "MikroTik" in a stylized font. The "Mikro" part is in a lowercase, italicized sans-serif font, and the "Tik" part is in a bold, uppercase, italicized sans-serif font. A small, stylized graphic of three curved lines is positioned above the "i" in "Mikro". The entire logo is reflected on a light gray surface below it.

MikroTik