

- New RB4011 series
- CWDM
- mANTBox 2 12s
- SXTsq Lite60

- BaseBox 6
- 80 km SFP modules
- MUM schedule

# THE 4011 SERIES

FUEL YOUR NETWORK



The RB4011 uses the amazingly powerful quad core Cortex A15 chip from Annapurna labs, an Amazon company, same as in our carrier grade RB1100AHx4 unit. The CPU supports IPsec hardware acceleration, there is 1GB of RAM, so this device will easily handle any task you have configured RouterOS to perform. All of this power, in a compact and professional looking solid metal enclosure in matte black.



1.4GHZ CPU

X4

QUAD CORE ARM



IPSEC ACCELERATED



4 CHAIN WIFI

0 1 0 0  
0 0 0 0  
1 0 1 1

1733MBPS DATA RATE

## RB4011iGS+5HacQ2HnD-IN

The WiFi model is a dual band, four chain unit with a supported data rate of up to 1733 Mbps in 5 GHz. For legacy devices, the unit also has a dual chain 2.4 GHz interface. The device has large external antennas for amazing 360 degree coverage.

In addition to the ten 1 Gbps ethernet ports, an SFP+ port provides optional 10 Gbps connectivity through an SFP+ module (not included).



\$249

[View online](#)

## RB4011iGS+RM

In comparison with WiFi model, the RB4011iGS+RM has the same features, except WiFi, but includes two rackmount ears, that will securely fasten the unit in standard 1U rack space.



\$199

[View online](#)

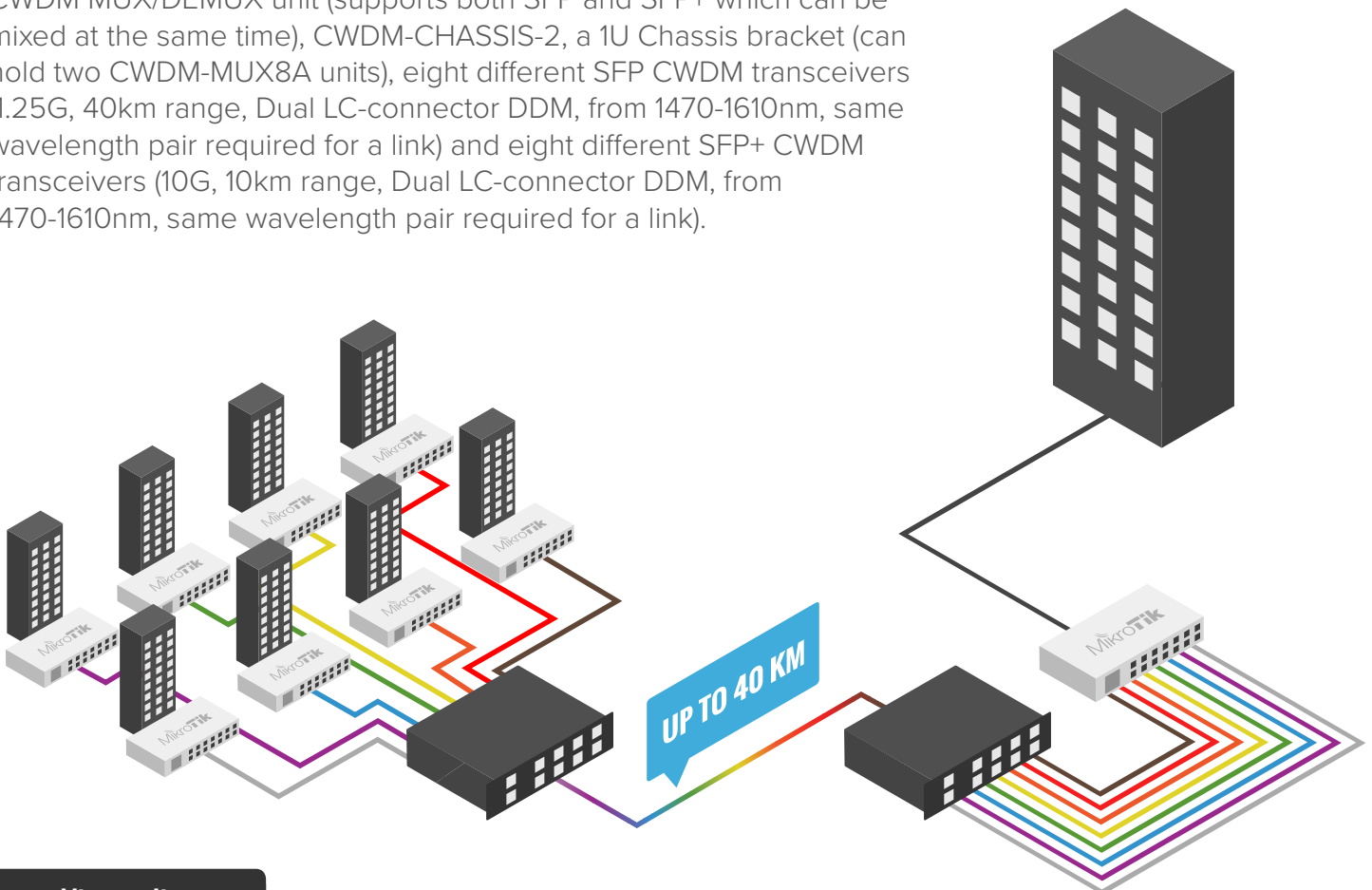
## CWDM

The Coarse Wavelength-Division Multiplexing (CWDM) technology offers a solution which will increase capacity of existing fiber infrastructure by enabling multiple channels/wavelengths over the same fiber cabling and will reduce costs for a new fiber optic deployment.

The MikroTik CWDM is a passive MUX/DEMUX unit, which allows to combine up to eight fiber links into one, to simplify and reduce the cost of long distance fiber installations. At the other location, the combined line is split back up again, so that instead of eight long fiber lines, you would only need one.



Our product range includes CWDM-MUX8A, the 8-port CWDM MUX/DEMUX unit (supports both SFP and SFP+ which can be mixed at the same time), CWDM-CHASSIS-2, a 1U Chassis bracket (can hold two CWDM-MUX8A units), eight different SFP CWDM transceivers (1.25G, 40km range, Dual LC-connector DDM, from 1470-1610nm, same wavelength pair required for a link) and eight different SFP+ CWDM transceivers (10G, 10km range, Dual LC-connector DDM, from 1470-1610nm, same wavelength pair required for a link).



[View online](#)

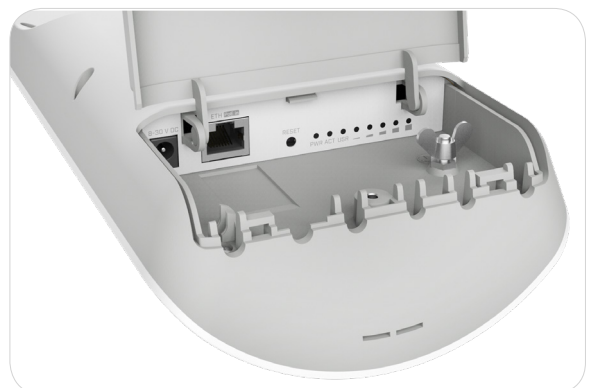
## mANTBox 2 12s

mANTBox 2 12s is long range 12dbi 120 degrees integrated Base Station for 2.4 GHz.

The mANTBox is based on our new mANT sector antennas, but also has a wireless router built right in. Powered by the RB911 device, the mANTBox comes ready to use with everything included. The device uses a high speed 600 MHz CPU, comes with the Gigabit Ethernet port and has a built in 802.11 b/g/n wireless device with up to 30 dBm output power.



The mANTBox 2 12s is compatible with the SXT type mount, so you can use it with our durable and adjustable quickMOUNT systems. It comes with quickMOUNT PRO included.



[View online](#)

## SXTsq Lite60

The SXTsq Lite60 is a new model in our 60 GHz lineup. This is a low cost CPE unit for connecting to a 60 GHz AP, enabling you to build a cost effective point to multipoint setup in the clean 60 GHz wireless spectrum. Connect up to eight of these CPE units to a 60 GHz access point, such as our wAP 60G AP.



24 V 0.38 A power adapter



Metal ring

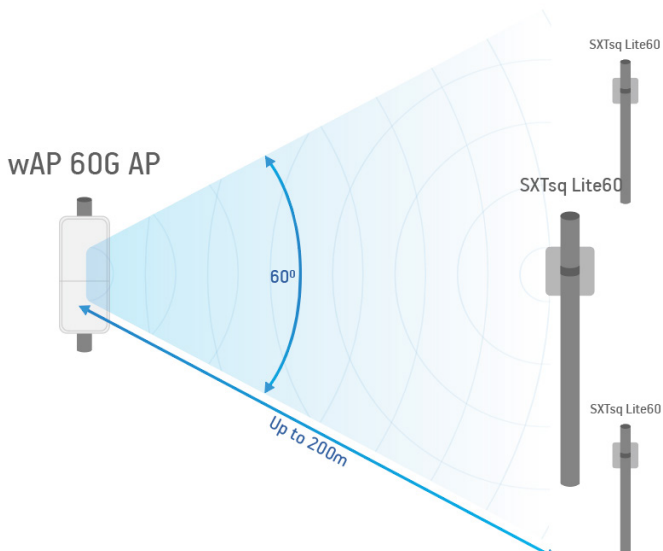


PoE injector

**\$69**



This is the best alternative for Point-to-Multipoint connections where 2 and 5 GHz wireless space is crowded and unreliable, at a fraction of the cost. Small, lightweight, compact and very affordable, this is a 60 GHz device like no other before.



Example of SXTsq Lite60 usage. It is possible to set up a link up to 200 meters with our compact and powerful wAP 60G AP for high speed communications with multiple clients. Since the AP supports up to 1Gbps over wireless, there is plenty of bandwidth to split to up to eight clients.

[View online](#)

## BaseBox 6

The BaseBox 6 is an outdoor wireless device, based on our popular RB912 model, fitted with two SMA connectors for antennas, and a cable hood for protection against moisture. Also available are three additional places for antenna connectors, in case you wish to use the BaseBox miniPCle slot for one more wireless interface to make a dual band device, or a 3G/4G modem. The case can be opened with one hand, and is protected against the elements. USB, Ethernet and a Grounding wire exits are provided on the bottom, behind a protective door.



The BaseBox 6 model operates in the 6 GHz wireless spectrum, in regions where this range is available.

It comes with a mounting loop for tower/pole mounting, and a separate DIN rail mount is also provided. Package also includes a PoE injector and power supply unit.

[View online](#)

## 80 km SFP modules

We are now offering industrial grade SFP modules for distances up to 80km with operating temperature -40C..+85C! Two long range models are available now:

**S-55DLC80D** is 1.25Gbps SM 1550nm 80km module with Dual LC connector

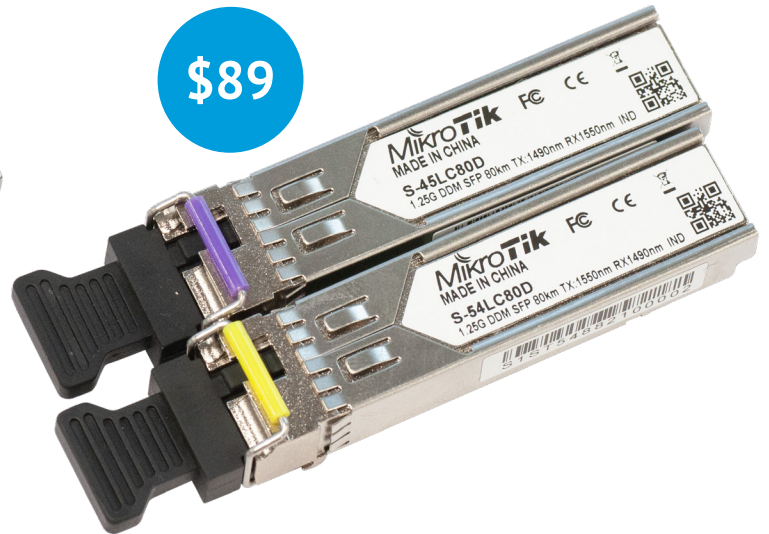
**S-4554LC80D** is a pair of modules, that includes one S-45LC80D (1.25G SM 80km TX 1490nm/ RX 1550nm, Single LC connector) module and one S-54LC80D (1.25G SM 80km TX 1550nm / RX 1490nm,Single LC connector) module

\$39



[View online](#)

\$89



[View online](#)

## Upcoming MUM events in 2018



Moscow, Russia,  
September 28 - 29, 2018



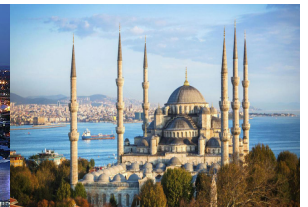
Almaty, Kazakhstan, October 03, 2018



Valencia, Spain, October 05, 2018



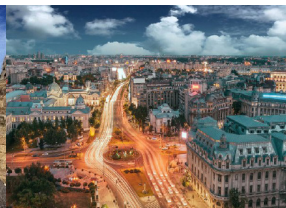
Birmingham, United Kingdom, October 08, 2018



Istanbul, Turkey, October 15, 2018



Yogyakarta, Indonesia, October 19 - 20, 2018



Bucharest, Romania, October 29, 2018



Tirana, Albania, November 01, 2018



Buenos Aires, Argentina, November 15 - 16, 2018



São Paulo, Brazil, November 19 - 20, 2018